

## 1. WHITEMAN PARK



Whiteman Park is a fun place for the whole family to visit. There's a children's forest, bush walking trails, cycle paths, playgrounds, heritage tram and vintage train rides, the Tractor and Motor Museums of WA, a mini water playground, a lolly shop, barbecues, picnic shelters, Pia's Place all abilities playground and a cafe.

**Find us:** 233 Drumpellier Dve, Whiteman. Open 7 days. Phone 08 9209 6000 or visit [whitemanpark.com.au](http://whitemanpark.com.au)

## 2. CAVERSHAM WILDLIFE PARK



Caversham Wildlife Park has the largest privately-owned collection of native wildlife in WA, including birds, mammals, marsupials and reptiles. Daily attractions include Meet the Wombat and Friends, Feed the Kangaroos, the Farm Show, Penguin Feeding, Molly's Farm and Meet the Koalas. Ensure you allow three hours for your visit!

**Find us:** 233 Drumpellier Dve, Whiteman. Open 7 days. Phone 08 9248 1984 or visit [cavershamwildlife.com.au](http://cavershamwildlife.com.au)

## 3. THE HENLEY BROOK



This local roost boasts the Swan Valley's biggest backyard for kids to play. The family-friendly venue offers a regular program of free activities for the kids. Local produce is featured on the menu. Bookings are strongly advised. Kids, don't forget to show staff your best "chicken dance" for a free icy pole. See all you hens, roosters and chicks on the trail.

**Find us:** 9810 West Swan Road, Henley Brook. Open 7 days. Phone 08 9296 2985 or visit [thehenleybrook.com.au](http://thehenleybrook.com.au)

## 7. SWAN VALLEY CUDDLY ANIMAL FARM



Winner 2018 – "What's On 4 Kids" Best Family Day Out. We all love cuddles and these friendly farm animals are the cutest in the Swan Valley. Our country-style farm has all the animals that will make you smile - bunnies, goats, ponies, pigs and more. There are free tractor-train rides, a bouncy castle, playground, vintage merry-go-round and the chance to bottle and bucket feed animals. Visitors can also enjoy the cafe, barbecues and picnic facilities.

**Find us:** 128 John Street, Henley Brook. Open 7 days. Phone 0424 209 730 or visit [cuddlyanimalfarm.com.au](http://cuddlyanimalfarm.com.au)

## 8. VINES MINI GOLF



Vines Mini Golf really is the perfect activity to keep the little kids entertained - and the big ones too. Plan a bite to eat before or after you tee off on the state-of-the-art 18-hole course. Try to beat the grown-ups at their own game! No bookings required.

**Find us:** Verdelho Drive, The Vines. Open 7 days. Phone 08 9297 3000 or visit [vinesminigolf.com.au](http://vinesminigolf.com.au)

## 4. OASIS SUPA GOLF AND MINI GOLF



Experience a modified game of golf that's suitable for all ages! Oasis Supa Golf uses oversized equipment on a short grass course and mini golf is played among lush palms and gardens. Allow around 90 minutes to play. Plan to enjoy a snack at the kiosk, or visit Mash Brewery or Oasis Restaurant located onsite.

**Find us:** 10250 West Swan Road, Henley Brook. Open 7 days. Phone 08 9296 5566 or visit [getgolfing.com.au](http://getgolfing.com.au)

## 5. WA REPTILE PARK



A fun, educational and real family wildlife experience where you can hold a cuddly python or scaly lizard, and see venomous snakes, crocodiles, a boa constrictor, wombats and dingoes. Bring lunch, use the barbecues, and relax in the shady picnic area.

**Find us:** 92 Henley Street, Henley Brook. Open Fri – Mon, School and Public holidays. Phone 08 9296 3101 or visit [wareptilepark.com.au](http://wareptilepark.com.au)

## 6. OGGIES ICE CREAM CAFE



What do you get when you mix ice cream, kids and dogs? The best place to eat icy treats in the Swan Valley – that's what! Bring your pooch and the whole family and take your time choosing from more than 60 flavours of homemade ice cream. There's also a huge array of lunches and delicious icy drinks! Mmm mmm.

**Find us:** 10581B West Swan Road, Henley Brook. Open 7 days. Phone 08 9296 6095 or visit [oggiesicecreamcafe.com](http://oggiesicecreamcafe.com)

## 9. BELLS RAPIDS



Bells Rapids is the place to enjoy a picnic or barbecue, a bush walk, bird life and the beauty of the Australian bush. Explore 2.5kms of walking trails and a bridge that spans the Swan River allowing walkers to enjoy scenic views of the rapids and surrounding bush. You may even get lucky with a visit from our beautiful grey kangaroos.

**Find us:** Cathedral Avenue, Brigadoon

## 10. WHISTLER'S CHOCOLATE CO.



Everybody loves chocolate, honeycomb and ice cream and Whistler's has a huge range of delicious chocolate goodies for the sweet tooth. See the 100kg chocolate sculpture or eat at the cafe which offers light meals, great coffee and a kids menu. Parents can relax while the kids play in the fully enclosed outdoor space with a sandpit, toys, chalk board and nature play.

**Find us:** 506 Great Northern Hwy, Middle Swan. Open Wed-Sun. Phone 08 9274 7777 or visit [whistlers.com.au](http://whistlers.com.au)

For more family fun trails in the Swan Valley be sure to visit [swanvalley.com.au](http://swanvalley.com.au) to discover The Great Valley Rally and Amazing Valley Chase adventure trails.

## Welcome to the Swan Valley

The Swan Valley has plenty of family-friendly adventures that will get your kids excited!

Kids and grown-ups alike can feed Australian wildlife, hold a reptile, play mini golf, cuddle farm animals, venture on a bush walk and so much more.

Once you've finished your adventure, you can revive the family at one of the many venues that offer kids menus.

Or why not pick up picnic supplies from a Swan Valley or Guildford cafe or bakery to enjoy at a park or by the Swan River. Then, finish your day with a delicious chocolate or ice cream treat stop. Follow the map to find out more!

The activities on the trail can be enjoyed over many days. They're ideal for school holiday fun, a family day out or a weekend stay. Each time you visit, we suggest you choose one adventure, a lunch stop and a special treat stop.



### Swan Valley Visitor Centre

For visitor information, maps, souvenirs, accommodation and tour bookings:

Guildford Courthouse  
Corner Meadow and Swan Streets, Guildford  
Open 7 days, 9am - 4pm  
08 9207 8899  
[swanvalley.com.au](http://swanvalley.com.au)

@theswanvalley /theswanvalley

## Location of the Swan Valley

The Swan Valley is located a short 25 minute drive from the Perth CBD and 20 minutes from Perth Airport.

One of the best ways to explore the Kids in the Valley Trail is to self-drive.

Should you require a hire car, collection points are conveniently located at Perth Airport and a variety of Perth CBD locations.

You might like to consider booking an Uber or taxi to transport you around the trail.

If chartering a bus for larger groups, please contact the venues directly to book to avoid disappointment.

## About WA Food & Wine Trails

Western Australia is blessed with a huge range of memorable food and drink experiences. The WA Food & Wine Trails provide a sample of what is available across the state.

Make sure you look out for them on your travels.

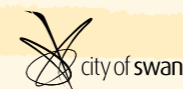


Visit the Trails WA website at [trailswa.com.au](http://trailswa.com.au) and download the TrailsWA app from the App Store to find more trails to explore.

Produced with the support of **Tourism WA**



SWAN VALLEY  
VINEYARDS SINCE 1829



0017MSV-2020

## Ready to get started?

**Kids, it's time for you to choose!**

Buckle up and get your grown ups to take you out for a day of adventure in the Swan Valley!

To get started, every explorer needs to read the brochure and choose **three** things on their adventure:

**An adventure activity**

**A lunch stop**

**A special treat stop!**

You can choose to visit a wildlife park, a cuddly animal farm or a reptile park; go on a bush walk, play a game of mini golf, ride a train or play at a mini water park.

Choose a lunch stop where the grown-ups can pack a picnic or order from the kids menu. Then for the yummiest part, pick a chocolate or ice cream treat stop!

**Sounds like fun, doesn't it?**

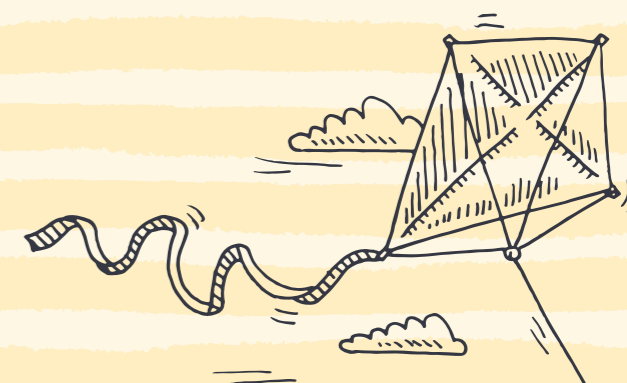
Follow the fun map. Play **I Spy** and mark how many things you find along the way and at the places you visit.

Then, put your map in a special place to plan your next Swan Valley adventure.

Published days open are subject to change.  
Please phone or check the business website.

Swan Valley

## KIDS IN THE VALLEY TRAIL



WA  
**FOOD & WINE**  
TRAILS



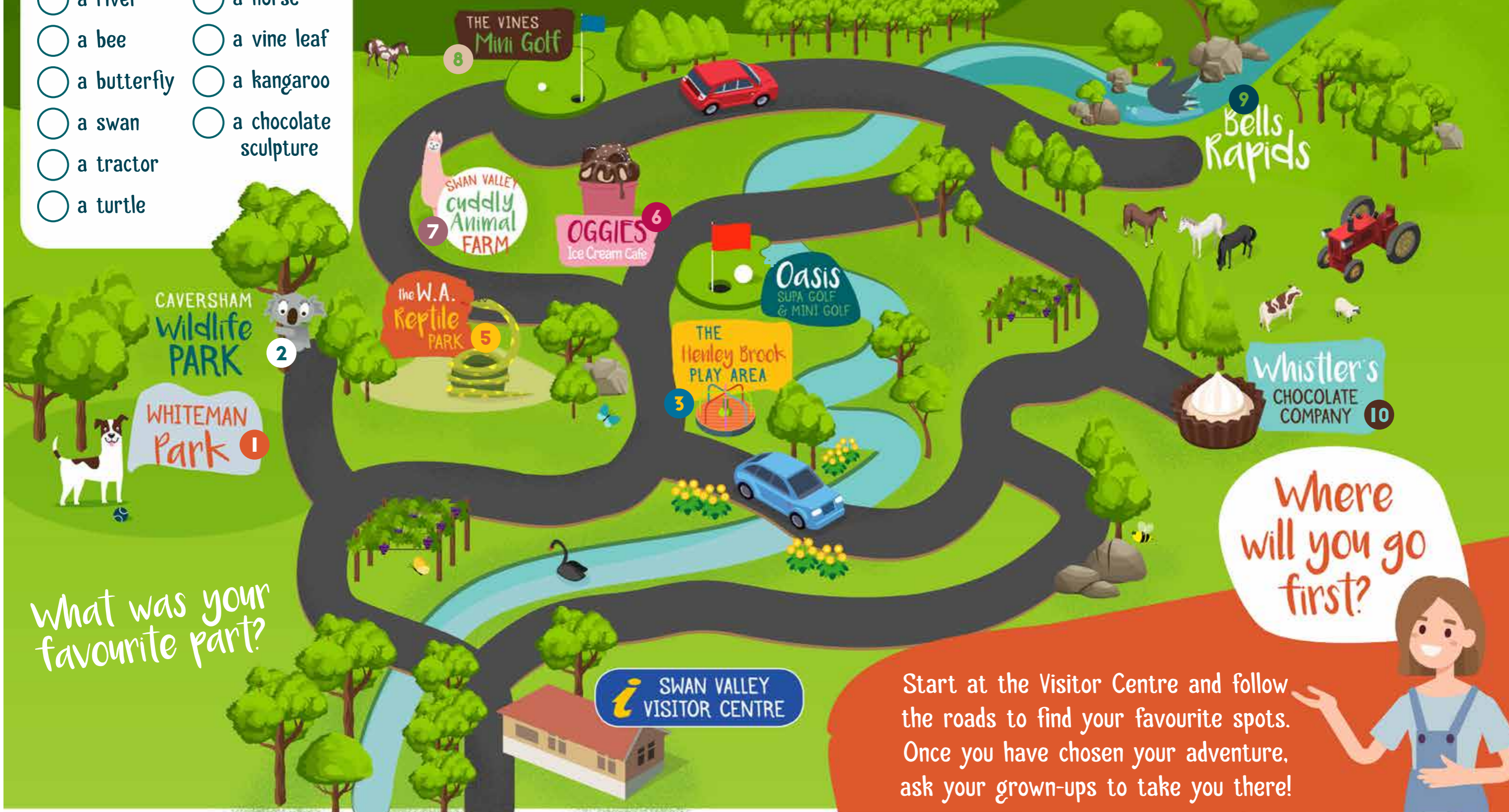
ALONG THE TRAIL

# I Spy...

TICK THE THINGS YOU SEE WHILE EXPLORING THE SWAN VALLEY

- a plane
- a river
- a bee
- a butterfly
- a swan
- a tractor
- a turtle
- a bridge
- a horse
- a vine leaf
- a kangaroo
- a chocolate sculpture

# Kids IN THE Valley TRAIL MAP



What was your favourite part?

Where will you go first?



Start at the Visitor Centre and follow the roads to find your favourite spots. Once you have chosen your adventure, ask your grown-ups to take you there!

 SWAN VALLEY VISITOR CENTRE