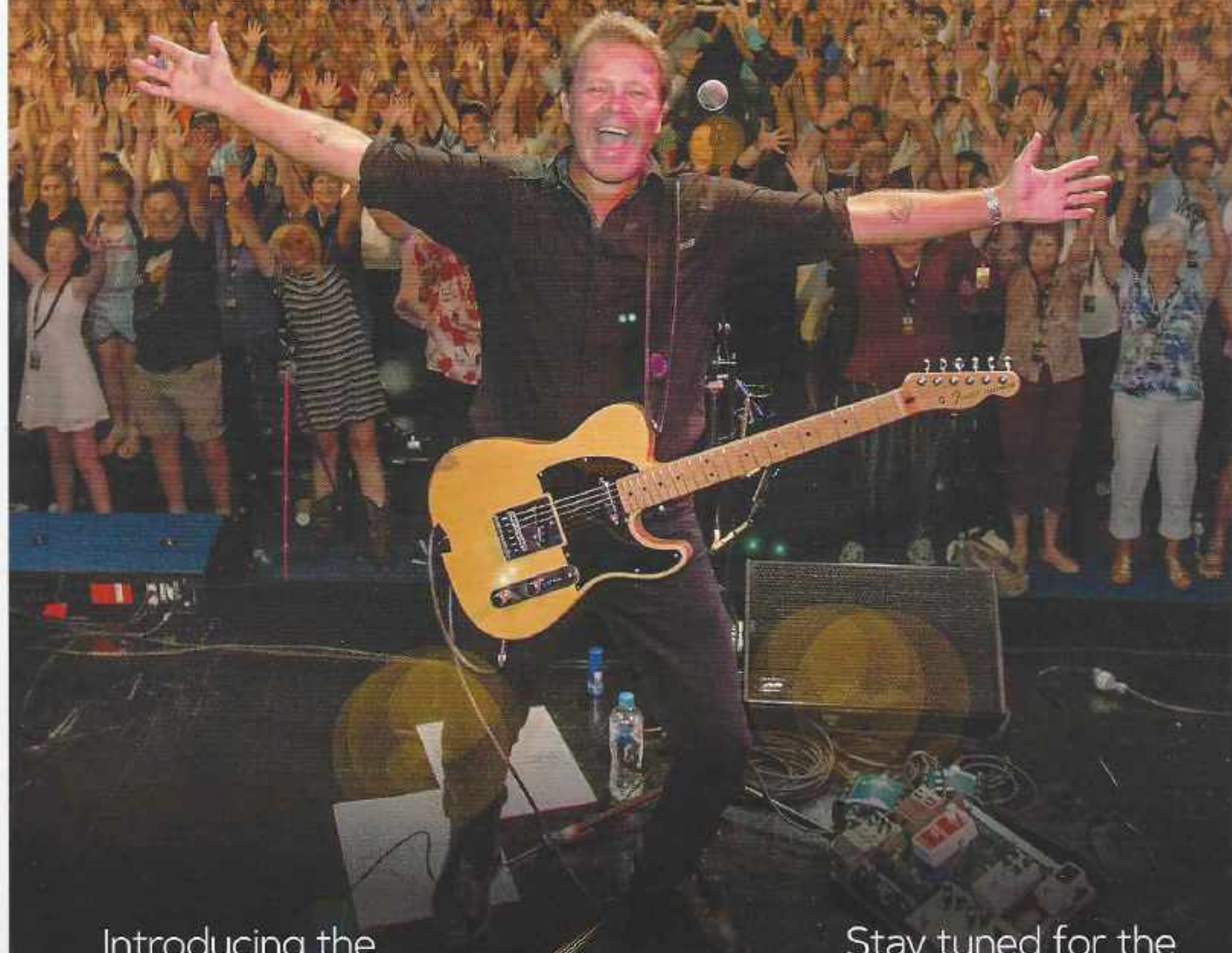


TAMWORTH

BARRABA | MANILLA | NUNDLE



Introducing the
National Thunder
Motorcycle Rally



Stay tuned for the
National Guitar
Museum



destinationtamworth.com.au



Be our

guest



The Powerhouse Tamworth

- Multi million dollar 5 star rooms redevelopment
- The Workshop Kitchen open breakfast, lunch & dinner
- Coal Bunker Bar open daily until late
- Meetings & events
- Open 24 hours

6766 7000


info@qhptam.com.au

248 Armidale Road, Tamworth

the powerhouse

qualityhotelpowerhouse.com.au

 /PowerhouseTamworth

 @qualityhotelpowerhouse #QHPTG

Choose your experience

Visit the Tamworth region and discover all the great places to eat, stay and play.



8.



22.



29.



34.

WELCOME TO THE TAMWORTH REGION	4
CHOOSE YOUR EXPERIENCE	5
FESTIVALS AND WHAT'S ON	6
AUSTRALIA'S COUNTRY MUSIC CAPITAL	8
TAMWORTH COUNTRY MUSIC FESTIVAL	10
SIX FANTASTIC AND FREE THINGS TO DO IN THE TAMWORTH REGION	12
TAMWORTH	14
MAKE MEMORIES	24
THE TAMWORTH REGION THROUGH YOUR EYES	26
BARRABA	28
MANILLA	32
NUNDLE AND HANGING ROCK	34
CARAVAN AND CAMPING	38
GETTING HERE	65
MAPS	66



[destinationtamworth.com.au](https://www.destinationtamworth.com.au)



TAMWORTH VISITOR INFORMATION CENTRE

2 The Ringers Road
Tamworth NSW 2340
Phone: 02 6767 5300
OPEN 7 DAYS A WEEK



Cover image: Troy Cassar-Daley performing at TRECC

Disclaimer: While Tamworth Regional Council has made every effort to ensure the information supplied in this publication is suitable, accurate and complete, no guarantee is given that the material contained is free from error or omission. The material is intended for general use and information only. Tamworth Regional Council does not accept any responsibility for any change or withdrawal of details or services shown, which are subject to alteration without notice. Tamworth Regional Council, its officers, employees, servants and agents expressly disclaim all liability for any act done or admission made in reliance on such material, and any consequences of such act or omission. Information or images may not be reproduced without the written consent of Tamworth Regional Council. Our thanks to everyone who supplied their images for production in this Tamworth Region Visitor Guide.

Produced by Tamworth Regional Council. Printed and distributed by Ebisglobal NSW. Printed June 2019. © Tamworth Regional Council 2019.

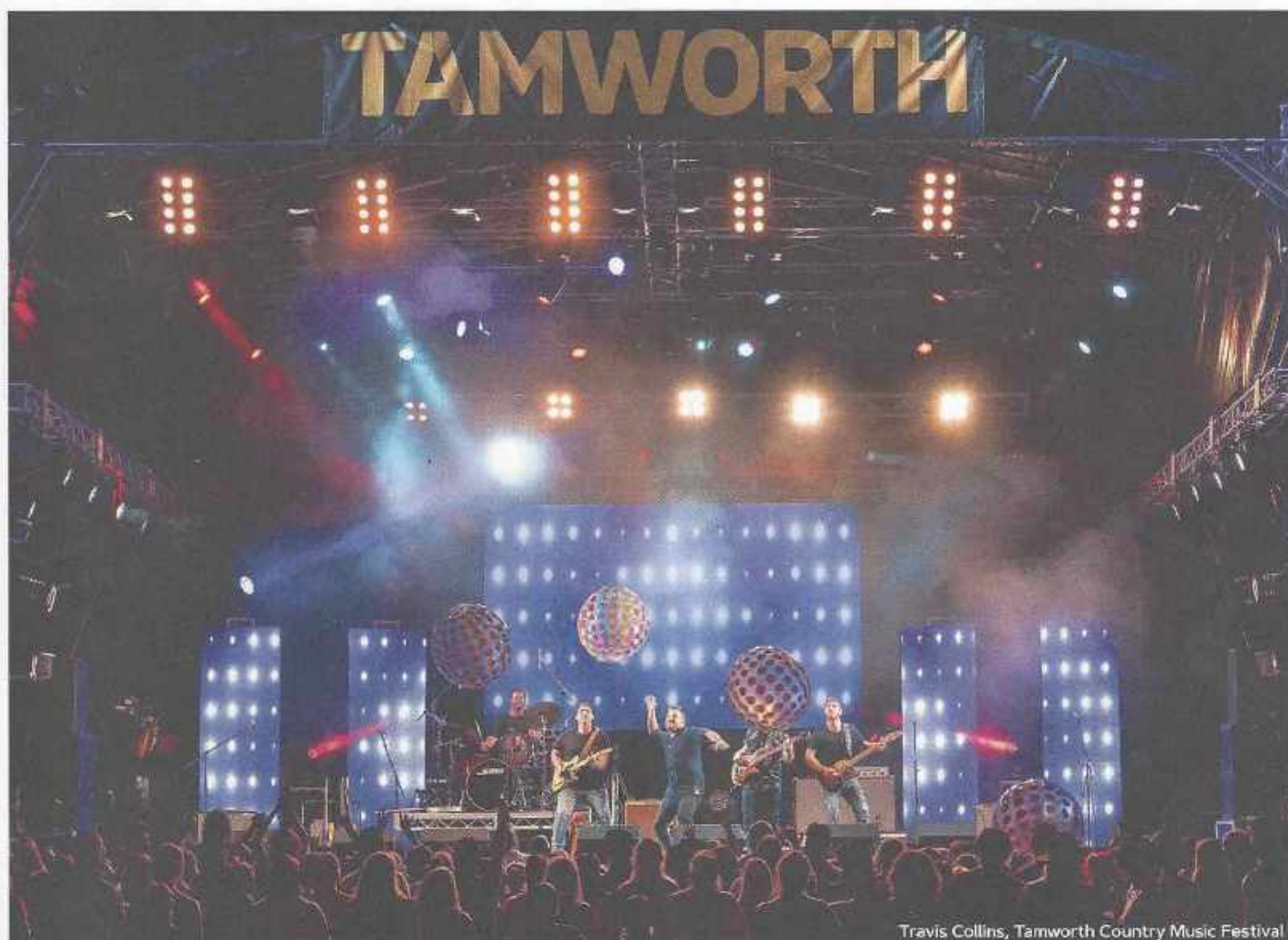
[DESTINATIONTAMWORTH.COM.AU](https://www.destinationtamworth.com.au)



WELCOME TO THE TAMWORTH REGION

Tamworth Regional Council acknowledges that the Tamworth local government area is situated on the traditional lands of the Kamilaroi/Gamilaroi/Gomeri people and it is on their traditional lands that we live, work and play. We recognise their continuing connection to this land and pay our respects to Elders past and present.

Boundary Rock, Tamworth



Travis Collins, Tamworth Country Music Festival

CHOOSE YOUR EXPERIENCE

As Australia's Country Music Capital and home to the world renowned Tamworth Country Music Festival, Tamworth is a regional city with music in its soul.

The Tamworth region is a destination of beautiful contrasts. A place to showcase rich heritage while embracing the future and the wonderful opportunity it holds for a growing and vibrant region. A place where one day you can go adventuring in the great outdoors, soaking up the natural beauty of the stunning surrounds and the next, experience cosmopolitan nightlife.

In addition to the city of Tamworth, the region has a host of smaller towns and villages. Barraba, Bendemeer, Kootingal, Manilla, Moonbi and Nundle, each with its own unique offering, contribute to the Tamworth region's appeal as a one-of-a-kind destination.

Tamworth is the gateway to some of the state's most spectacular bushland, National Parks, mountain ranges, rivers

Discover the experiences that await you in Barraba (page 28), Manilla (page 32) and Nundle (page 34).

Looking for some day-trip inspiration? Drop into the Tamworth Visitor Information Centre and Regional Outlets where you can get great advice on day trips to suit all tastes and how to make the most of all our region has to offer.

and dams. Not only does this make for beautiful scenery, it also provides endless opportunity for exploring and relaxing in the great outdoors. From horse riding and fishing to hiking, mountain bike riding, camping or water sports, it really is a case of choose your own adventure!

Regardless of your travelling style, the Tamworth region offers something for visitors of all ages and interests. Choose your experience, choose your rhythm, choose your escape. It's all here waiting for you in the Tamworth region. Come and enjoy all that's on offer, and remember you're always welcome.



Professional Bull Riders (PBR)

FESTIVALS AND WHAT'S ON

The Tamworth region is a great place to visit any time of year, with a robust calendar of events to entertain and inspire. From outdoor and sporting events, cultural and community events, food festivals, family events and of course country music and live entertainment galore. The region is buzzing with activity year-round.

In addition to our annual calendar of major events, there are plenty of local events staged regularly throughout the year including; theatre productions, weekly growers' and artisans' markets, art and craft workshops, author talks, sporting events, children's activities and much more.

Here is just a taste of the great events to enjoy each year. Check out a complete and up-to-date month-by-month listing at destinationtamworth.com.au to find out what's on when you're planning your visit.

Share the passion and get ready for Tamworth's newest event –

The National Thunder Motorcycle Rally!

Kicking off in October, 2020 at the Australian Equine and Livestock Events Centre (AELEC), National Thunder will be three days of family-friendly fun featuring magnificent bikes, live music and delicious food.

Want to learn more?

Visit destinationtamworth.com.au/nationalthunder.



Taste Tamworth Festival



National Thunder Motorcycle Rally



Adam Harvey & Missy Lancaster, Golden Guitar Awards

January

- Tamworth Country Music Festival
- The Golden Guitar Country Music Awards of Australia
- Australian Bushman's Campdraft and Rodeo Association (ABCRA) National Finals

February

- Landmark Classic Campdraft and Sale
- Cinema Under the Stars



Landmark Classic Campdraft & Sale

IMAGE Wild Files Photography

March

- National Cutting Horse Association (NCHA) National Finals
- Nundle Country Picnic
- Grey Fergie Tractor Muster, Bendemeer (triennial event)
- Barraba Show
- Manilla Show
- Australian Stock Horse Society (ASHS) National Show

- North and North West Show Jumping Club Championships
- Independent Miniature Horse Registry National Show



Nundle Country Picnic

April

- Nundle Go For Gold Easter Festival
- Australian Quarter Horse Association (AQHA) National Championships
- Taste Tamworth Festival
- Tamworth Regional Heritage Festival
- Paint Horse Association of Australia National Show
- Pedal the Peel Cycling Challenge

May

- Great Nundle Dog Race
- Mayworth, Australian Country Dance Festival
- Australian National Working Equitation Championships
- Boer Goat Breeders National Show
- Australian Miniature Horse Society National Show
- Shannon's Classic Motor Show
- Tamworth International Eventing

June

- National Cutting Horse Association (NCHA) Futurity
- Horton Valley Dog Trials
- Manilla Vintage Machinery Group Annual Rally

July

- Hats Off to Country Festival
- Christmas in July, Hanging Rock
- Tamworth Antique & Collectables Fair
- Frost Over Barraba Arts Festival

August

- Tamworth Running Festival
- AgQuip Field Days, Gunnedah



Tamworth Show

September

- Tamworth Show
- Shooting, Hunting and Outdoor Expo
- Reining Australia Gold Buckle Futurity and National Show
- Tamworth Craft Alive
- Manilla Campdraft
- Kootingal Country Fair
- Agility Dog Association of Australia National Grand Prix

October

- Fiesta La Peel Multicultural Street Festival
- Dungowan Village Fair
- National Thunder Motorcycle Rally
- Manilla Volunteer Rescue Association (VRA) Antiques and Collectors Fair
- Spring Into Art at Bendemeer
- The Night of the Horse

November

- Fuller Gallery Annual Exhibition, Barraba
- Professional Bull Riders (PBR) Invitational
- Nundle Country Women's Association (CWA) Art Exhibition and Sale
- Australian Stock Day Spectacular

December

- Lighting of the Tamworth Community Christmas Tree
- Carols in the Park
- Upper Horton Rodeo and Campdraft



Lighting of the Christmas Tree



Fiesta La Peel



Brad Cox, Hats Off to Country Festival

AUSTRALIA'S COUNTRY MUSIC CAPITAL

Mention Tamworth to almost anyone and they will recognise it as Australia's Country Music Capital!

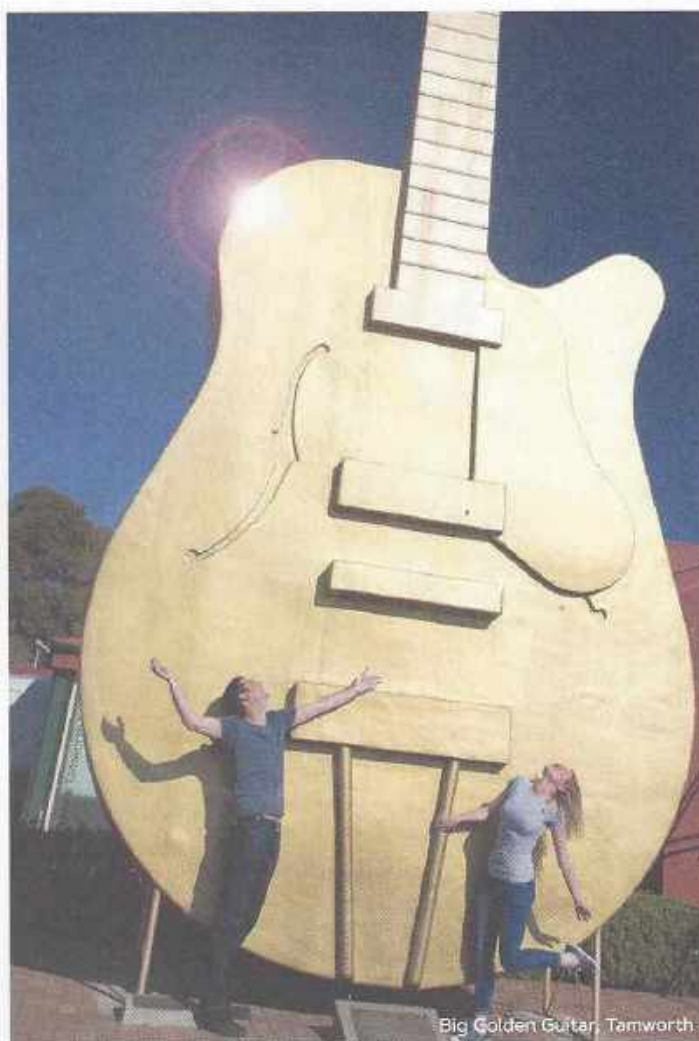
Each January, Tamworth welcomes over 300,000 visitors to the 10-day Tamworth Country Music Festival, but the spirit of country music delights visitors all year-round. With numerous monuments, museums and smaller festivals and events, Tamworth is a destination where you can experience the history, folklore and legends of country music anytime you choose to visit.

Ever wondered how Tamworth came to have the title of Country Music Capital? Want to learn how the festival grew from humble beginnings into the world-class event it is today? Perhaps you're keen to discover more about country music's icons, and find out how Tamworth helped launch the careers of some of Australia's most distinguished country artists?

The Country Music Trail is a fantastic way to immerse yourself in all that the Country Music Capital has to offer.

Australian Country Music Hall of Fame: A fascinating archive and the most extensive collection of country music memorabilia in Australia. It includes the Walk A Country Mile Interpretive Museum, Broadcasters' Hall of Fame and the Tamworth Songwriters Association Song Makers Tribute. Housed in the famous guitar-shaped building on Peel Street, there is no other music museum like it!

The Big Golden Guitar Visitor Information Centre (VIC): The 12-metre-high, 500kg Big Golden Guitar is a must-see for every visitor to Tamworth. The VIC also includes the Gallery of Stars Wax Museum and the Country Music Guitar Wall which boasts an impressive collection of guitars signed by both Australian and international music stars. A national Guitar Museum is also being established.



Big Golden Guitar, Tamworth



Australian Country Music Hall of Fame, Tamworth



Pioneers Parade, Tamworth

Tamworth Regional Entertainment & Conference Centre (TRECC):

TRECC boasts a diverse entertainment calendar and has hosted a range of acts including country music superstars Dolly Parton, Alan Jackson, Keith Urban, Carrie Underwood, Willie Nelson and Kris Kristofferson, and is the home of the Golden Guitar Awards each January. Stars of country music have been immortalised in bronze plaques in the forecourt as part of the Galaxy of Stars, and TRECC is also the home of the Australian Country Music Roll of Renown, an honour roll of artists who've contributed to the development of Australia's country music industry. Recent recipients have included Troy Cassar-Daley, Kasey Chambers and James Blundell.

Golden Guitar Winners Plaques and Bronze Statues:

Right in the heart of Tamworth, along bustling Peel Street you will find tributes to Golden Guitar winners along the footpath. Be sure to also keep your eyes out for life-size statues of Slim Dusty and his wife Joy McKean, as well as Smoky Dawson.

Country Music Pioneers Parade: Wander down Fitzroy Street Plaza to Bicentennial Park and explore the row of commemorative bronze busts honouring pioneers of country music Tex Morton, Buddy Williams, Shirley Thoms, Reg Lindsay, Chad Morgan, Jimmy Little and Frank Ifield.

Country Music Hands of Fame Park: See how your handprints measure up to your favourite stars, like John Williamson, Lee Kernaghan and Felicity Urquhart! New handprints are added each year during the Tamworth Country Music Festival.



Hurricane Fall, Longyard Hotel

TAMWORTH COUNTRY MUSIC FESTIVAL

The Destination for Country Music

When Peel Street becomes a sea of hats and impromptu dancers move to tunes on the street, guitars are strummed, boots are tapped, and the sound of live music greets you everywhere you go, you know it's festival time in Tamworth.

The Tamworth Country Music Festival is an award-winning and internationally renowned event. It's the largest music festival in the Southern Hemisphere, has been billed as one of the Top 10 Festivals in the world and has been rated by Forbes Magazine as number eight in their list of the World's Coolest Music Festivals!

The 10-day annual event attracts over 300,000 music lovers from all walks of life and all corners of the world. More than 700 unique performers, 2,800 events in 120 different venues across the region means that nearly every pub, club, café and restaurant are vibing as the entire city embraces the spirit of the festival.

Tamworth takes the title of Australia's Country Music Capital seriously! Regardless of when you visit, you'll be able to enjoy live music every week of the year in the Tamworth region. While country music is the heart and soul of Tamworth's music scene, acts of all musical genres are enjoyed. If you love live music, you've come to the right place. Be sure to check out a month-by-month calendar of live music events at destinationtamworth.com.au

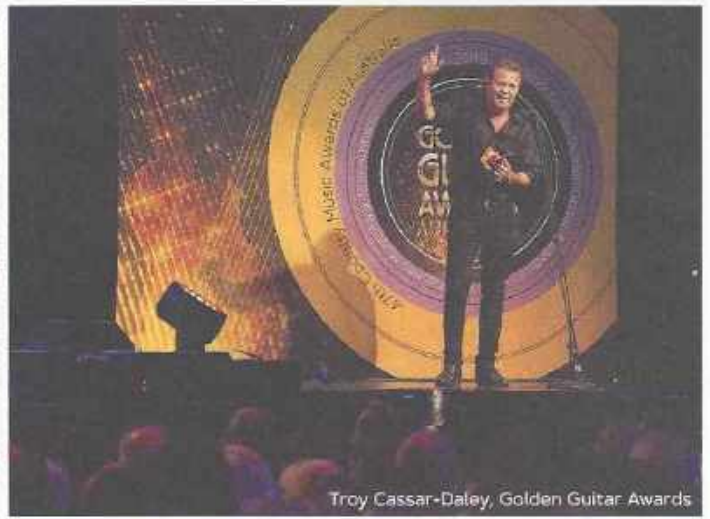
One of the highlights of the festival is Peel Street, music's Boulevard of Dreams, which becomes a pedestrian-friendly precinct for thousands of fans who enjoy the eclectic atmosphere provided by hundreds of buskers and market stallholders. With shows running day and night throughout the festival, family-friendly events, free and ticketed concerts, some of country music's biggest names taking to the stage, the Golden Guitar Awards and so much more, the Tamworth Country Music Festival offers something for everyone.

Visit Tamworth at any time of year and you'll get a sense of the rich country music heritage. For a once-in-a-lifetime experience not to be missed, regardless of what kind of music you enjoy, the Tamworth Country Music Festival is a celebration that truly has to be experienced to be believed.

Learn more at tcmf.com.au



Peel Street



Troy Cassar-Daley, Golden Guitar Awards



Live music for all ages



Free concerts in Toyota Park



Fanny Lumsden



Moogee Pre-Pitched Camping



The Pig & Tinder Box

SIX FANTASTIC AND FREE THINGS TO DO IN THE TAMWORTH REGION

1. Head out for a walk: Check out the **Peel River Levee Bank** walk, which follows the top of the levee banks from Scott Road in the south of town, through the CBD via the award-winning **Tamworth Regional Playground** and **Bicentennial Park** to Jewry Street in the north. If you're up for a bit of a challenge, the **Kamilaroi Track** might be more for you, winding its way through the bushland of **Oxley Park** over several kilometres from its starting point at Tamworth's **Oxley Lookout**.

2. Take a tour: Head to the multi-award-winning **Nundle Woollen Mill** for one of their free guided tours, run daily Monday to Friday at 2pm. Welcoming over 30,000 visitors each year, the Mill houses antique machines working their magic to turn bales of Australian merino wool into yarn. It's truly a spectacle to see.

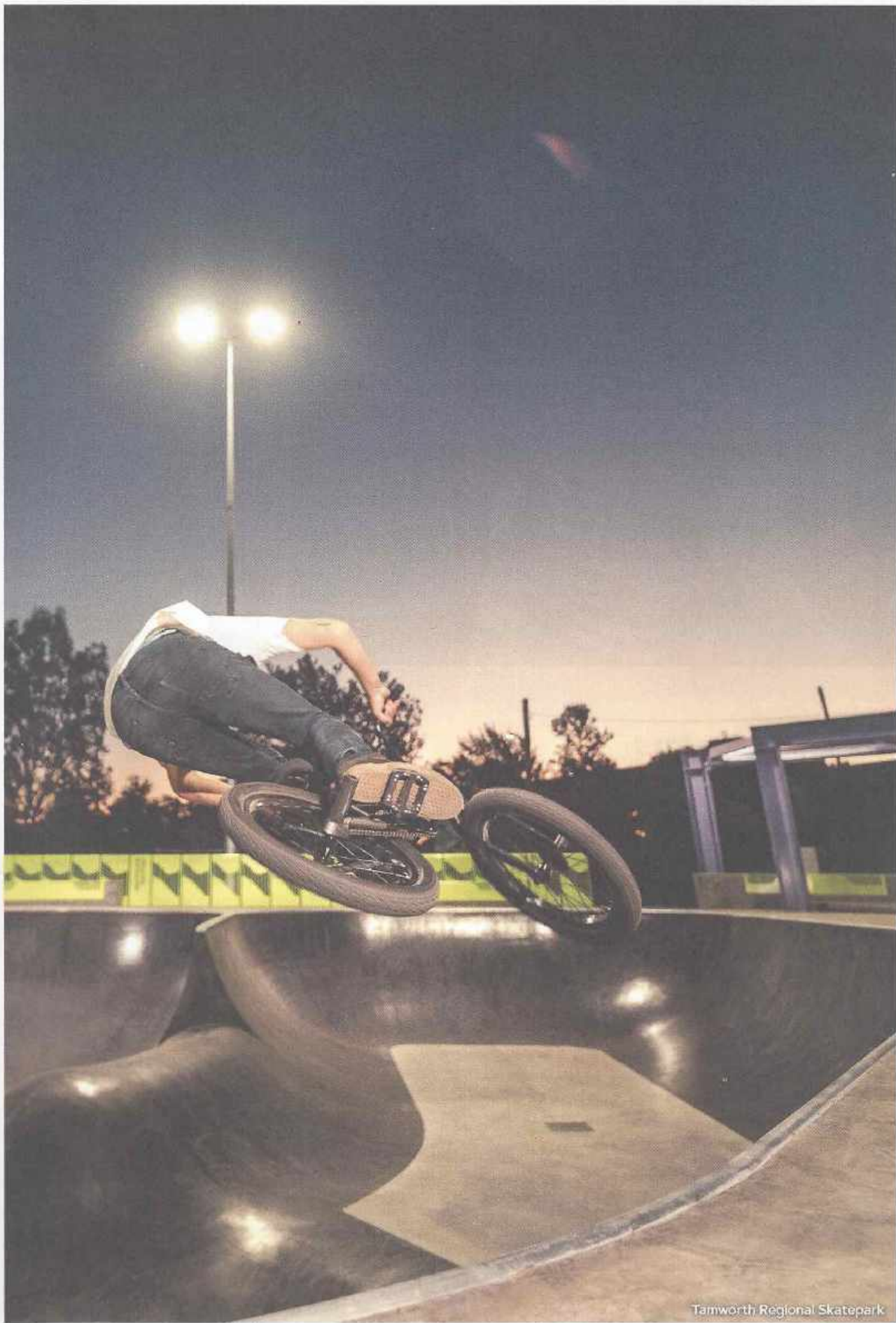
3. Pack a picnic: There are beautiful parks and gardens just waiting to host your next picnic; try the **Botanic Gardens**, part of the Victoria Park Precinct in East Tamworth where over 28 hectares of beautiful gardens offer picnic areas, walking tracks and amenities. And the best news, it's wheelchair accessible! Another fantastic spot to picnic is Tamworth's own **Bicentennial Park**, right in the centre of the city on Kable Avenue and next door to **Tamworth Regional Playground**. With toilet facilities and picnic tables, plus barbecue facilities just down the road, it's the perfect spot for an afternoon out with the family.

4. Get a view: In East Tamworth, head to **Oxley Lookout**, which has views of the city and the Peel River Valley. Just north-east of Tamworth, the spectacular **Moonbi Lookout** has views of the plains below Moonbi Hills, whilst the **Hanging Rock Lookout** is located at an elevation of 1,100m and shows off the Peel River Valley. To the north-west, get a view of Barraba from **Adams' Lookout**, or check out the Manilla township, Namoi River Valley and surrounding farmland from the **VJ Byrnes Lookout**.

5. Take in some art: There's no entry charge at **Tamworth Regional Gallery** which regularly hosts exhibitions of national significance, runs workshops and is open to the public all weekend. Other galleries in the region with free entry include the **Weswal Gallery** and **Gomeri gaaynggal Centre** in Tamworth, **Claycraft Productions** and **Moonbi Art Studio** in Moonbi, **Stormcrow Studio** in Nundle and **Fuller Gallery and Claypan** in Barraba.

6. Meet some legends: Take a stroll down **Pioneers Parade** in Bicentennial Park and check out the bronze busts, where you'll see Tex Morton, Stan Coster and Reg Lindsay amongst others immortalised there.





Tamworth Regional Skatepark

DESTINATIONTAMWORTH.COM.AU



The award-winning Tamworth Regional Playground

TAMWORTH

Tamworth isn't just a diverse, thriving and welcoming regional city, it's a lifestyle. It is a place where you can escape the grind of everyday life without having to forgo any conveniences. Whether you want to completely switch off and be at one with nature, wine and dine or get your adventure fix, Tamworth has it all.

If you love shopping, you're in for a treat in Tamworth where you can peruse a fabulous variety of boutiques, chain stores and department stores. You'll discover fashion and footwear, accessories, homewares, gifts and more. With many locally-made and unique treasures to be found, you'll no doubt find that perfect holiday keepsake.

If you're looking for true downtime, find your solitude and relax in one of the city's beautiful parks. Take a walk along the **Peel River**, explore the tranquillity of the **Tamworth Regional Botanic Gardens** or venture to the **Oxley Lookout** and take in the views with native birds singing as your soundtrack.

By night, enjoy a cocktail and cheese board before heading off to a live theatre performance. Sample some of the region's finest fare at any number of local restaurants or enjoy live music while you sit back and savour a tasty pub meal.

Whether you want a relaxing country escape, action-packed adventure or cultured getaway, whatever your style, you'll find the perfect experience in Tamworth.

A DESTINATION FOR FAMILY FUN

While in Tamworth create family memories that will last a lifetime, exploring a host of attractions and activities that are perfect for those travelling with children.

Experiences like learning to ride a bike and catching your first fish, stargazing on a balmy summer's night or watching the sunset while you're gathered around enjoying great fun.

If you're visiting with children young or old, Tamworth has plenty to lure them away from the screens and get them moving, exploring, and most importantly, having fun!



Forum 6 Cinema



JumpUp Trampoline Zone



DeKora



Tamworth Adventure Playground

Experience the giant slides, skywalk, water features and sway-bridge at the award-winning **Tamworth Regional Playground**, a must-visit for families with children of all ages.

Get up close with some of Australia's cutest native residents including kangaroos, wallabies, emus, echidnas, cockatoos and more, and experience the joy of **Tamworth Marsupial Park & Adventure Playground**. The Adventure Playground combines two age appropriate areas designed by Tamworth's children. Free gas barbecues are also available.

Enjoy a good old-fashioned family picnic or barbecue at one of Tamworth's most picturesque parks, **ANZAC Park** which offers loads of space to run and explore as well as a popular playground.

Learn all about Tamworth's rich country music heritage on the **Country Music Trail**.

If you're travelling with bike riders and scooter lovers, there are loads of places to burn off some of that excess energy including: **Bike Safety Park**, the **Mountain Bike Track** and the mini track located at **Tamworth Regional Playground**.

And don't forget to check out the **Viaduct Park Youth Recreation Hub**, a contemporary space including state-of-the-art skate park, events hill and terraced seating for spectators.

Cool off during the warmer months at one of the region's public swimming pools or take a trip out into the region to nearby **Lake Keepit** or other regional water holes (more information on **Chaffey Dam, Split Rock Dam** and **Sheba Dams** at page 38).

Experience the joy of the **Miniature Railway** which is located in the **Victoria Park Precinct** next to **Tamworth Regional Botanic Gardens**. Held on the third Sunday of each month, this is a classic family day out loved by children young and old.

Tamworth also offers plenty to see and do indoors including an indoor trampoline centre, cinema and indoor play centre.

Tamworth Regional Gallery, **Tamworth City Library** and **Tamworth Sports Dome** hold regular children's activities, classes and events.

Check out destinationtamworth.com.au to discover what's on.



A DESTINATION TO IMMERSE YOURSELF IN HISTORY

Home to the Kamilaroi/Gamilaroi/Gomeri People, the Tamworth region boasts a long and fascinating history.

The Peel Valley area was first visited by European explorers in 1815. Over the years, thanks to industries including; mining, brewing, milling and agriculture, Tamworth grew to become a major regional centre. The first Country Music Festival was held in 1973, putting Tamworth firmly on the map as one of Australia's must-visit destinations.

From discovering Indigenous rock art preserved across the region to learning how Tamworth became The First City of Light, exploring historical points of interest, monuments and museums will intrigue visitors.

You need not be a history buff to enjoy soaking up the tales of Tamworth's past!

Calala Cottage: An immersive museum experience with various buildings to explore. View Victorian-era furnishings and clothing, machinery, photographs, Aboriginal artefacts and much more.

Tamworth Powerstation Museum: A replica of the first powerstation built in 1888, explore the history of electricity in The First City of Light, see a diverse collection of lights,

communication equipment, kitchen items and so much more, plus view two John Fowler steam driven engine working replicas - the only of their type in the world! The museum is also home to the Veness Letter Book, inscribed in early 2019 to the UNESCO Australian Memory of the World Register.

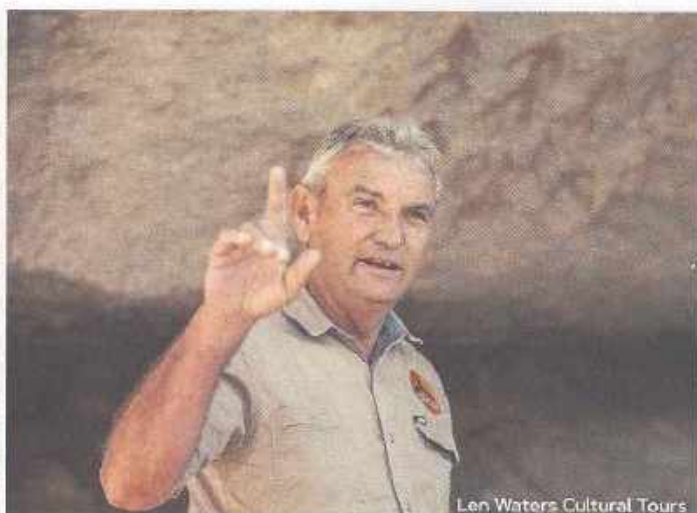
Moonbi Museum: Explore the history of Moonbi from 1865 to the present day.

Powerhouse Motorcycle Museum: With over 50 motorbikes hailing from the 20th century, all in immaculate working order, this is an impressive private collection that is well worth a visit, even if you're not a motorcycle enthusiast.

Tamworth Regional Film and Sound Archive: Home to over 8,000 film cans and cassettes of locally-produced visual material, and over 20,000 items on the database, the archive is a fascinating exploration of Tamworth's film and sound heritage dating back to 1916. In early 2019, it was announced that Ison's World War I Cinema Slides, which are housed at the archive, would be inscribed to the UNESCO Australian Memory of the World Register.



Cable Cottage Museum



Len Waters Cultural Tours



Powerhouse Motorcycle Museum



Tamworth Regional Film & Sound Archive



World War II Memorial



Memorial to the Australian Light Horse

War Memorials and Monuments

- ANZAC Park
- Railway War Memorial Park
- Man-O-War Gates, World War II Memorial and Memorial to the Australian Light Horse, Bicentennial Park
- Gipps Street Memorial Avenue of Honour
- Bridge Street Memorial
- Royal Australian Air Force Memorial
- Grave of the Unknown Soldier
- Australian General Hospital for Servicemen, Nazareth House



A DESTINATION FOR THE ARTS & CULTURE

If you seek the finer things in life, like experiencing art up-close and personal or enjoying live theatre performances, then Tamworth is your destination for arts and culture. And if you want to get hands-on or showcase your own creativity, you can get involved in one of many annual artistic and cultural events.

A growing community of artists, creatives and performers call Tamworth home, with the natural beauty of the region, unique history and laid-back pace of life no doubt inspiring incredible talent. The region is also home to world-class exhibition and performance spaces, ensuring we attract an impressive line-up of national and international events every year.

From stand-up comedy to dance productions, international art shows and exhibitions, musicals, ballet, author talks, artists' workshops and so much more, immerse yourself in all that Tamworth's art and cultural community has to offer.

GALLERIES

Tamworth Regional Gallery: This light-filled precinct hosts distinguished national and international art exhibitions and workshops for all ages. The Gallery holds significant collections including the Tamworth Textile Collection, the Salvana Collection and Regan Silverware Collection, and is also home to a fantastic giftshop.

Tamworth Regional Craft Centre: Enjoy community art shows and exhibitions as well as workshops on crafts including quilting, embroidery, woodturning, blacksmithing, bonsai and painting. You can also browse the impressive selection of art and crafts for sale.

Weswal Gallery: This intimate gallery showcases fine art and hosts regular events and exhibitions throughout the year. You'll also find a beautifully curated giftshop stocking ceramics, handmade jewellery, cards and more.

Gomeri gaaynggal Centre: Explore the colourful paintings and sculptures of local Indigenous women who create art as part of the Gomeri gaaynggal mother's art and health program.

Braecroft Cottage Gallery: Home of internationally renowned ceramicist Fred Hillier, tour the pottery workshop, gallery and unique handmade 'mudbrick' house and workshop.

ENTERTAINMENT VENUES

Hosting international performers, local acts and everything in between, Tamworth has a number of major entertainment venues for you to experience live entertainment.

The **Tamworth Regional Entertainment and Conference Centre (TRECC)** is Tamworth's largest entertainment venue with an annual calendar of concerts, shows and ceremonies including the Golden Guitar Awards, motor shows, caravan and camping exhibitions and much more.

The **Capitol Theatre** is a more intimate performing arts venue, hosting ballet, theatre shows, musicals, comedy, children's shows and more.

Opening in 1934, the **Tamworth War Memorial Town Hall** has long played a key role in the city's cultural offering, welcoming events and performances of all kinds including ANZAC Day ceremonies, concerts, musicals, conferences and weddings.



Tamworth Regional Gallery



An exhibition at Tamworth Regional Gallery



Tamworth Town Hall



Wesval Gallery



Dhina Wangi Walaaybaa Emu Nest



Picasso Guitar

Public Art

Tamworth is home to a growing display of public art. It forms part of our public history and part of the evolving culture of the city and region.

Learn more about our public art at destinationtamworth.com.au



DESTINATION FOR ADVENTURE

High speed adventure or low-key relaxation; whatever your pace, the Tamworth region is a fabulous place to enjoy the great outdoors.

When it comes to outdoor adventure, you don't have to go beyond the city to find some of Tamworth's best experiences. Bushwalking, river walks, golf and loads more can be found within moments of the CBD. However, if you travel less than an hour or so radius of Tamworth by car, you'll be met with countless ways to get the heart racing, all while enjoying breath-taking scenery.

Relax amongst some of New South Wales' most spectacular bushland. Experience the high-speed thrill of mountain biking downhill. Drop a line surrounded by tranquil hills and treelined waterways. Horse riding, 4WDing, camping and exploring. Tamworth is your destination for outdoor adventure.

Mountain Bike Park: Enjoy off-road riding? You'll be in your element exploring over 12 different tracks for riders of all abilities at Tamworth's mountain bike park. Less than 10 minutes from the city centre, the park offers a broad range of tracks, from very easy ones for children through to black runs for the more experienced riders.

Lake Keepit: One of Tamworth's favourite aquatic playgrounds, this is a top destination for boating, water sports, fishing and camping.

Chaffey Dam: If you love being on the water, whether for boating, skiing, fishing or swimming, Chaffey Dam should be on your list of things to see and do.

River Walk: Take a leisurely walk, run or cycle along the Peel River. For those who want an additional challenge, you'll also find exercise stations dotted along the walk.

Park Run: Test your fitness and meet friendly locals at the weekly 5km Park Run, held on Saturday mornings and departing from the corner of Murray and Peel Streets.

Golf Courses: Tamworth is home to two outstanding 18-hole golf courses. Whether you're an avid or social golfer, you'll love playing these courses.

Kamilaroi Walking Track: Starting at the Oxley Lookout, this network of tracks links the Lookout, Marsupial Park and Flagstaff Mountain over several kilometres. Located just minutes from the CBD, this is a great spot for exploring Tamworth's natural surrounds with a mix of moderate to challenging walks.



Lake Keepit



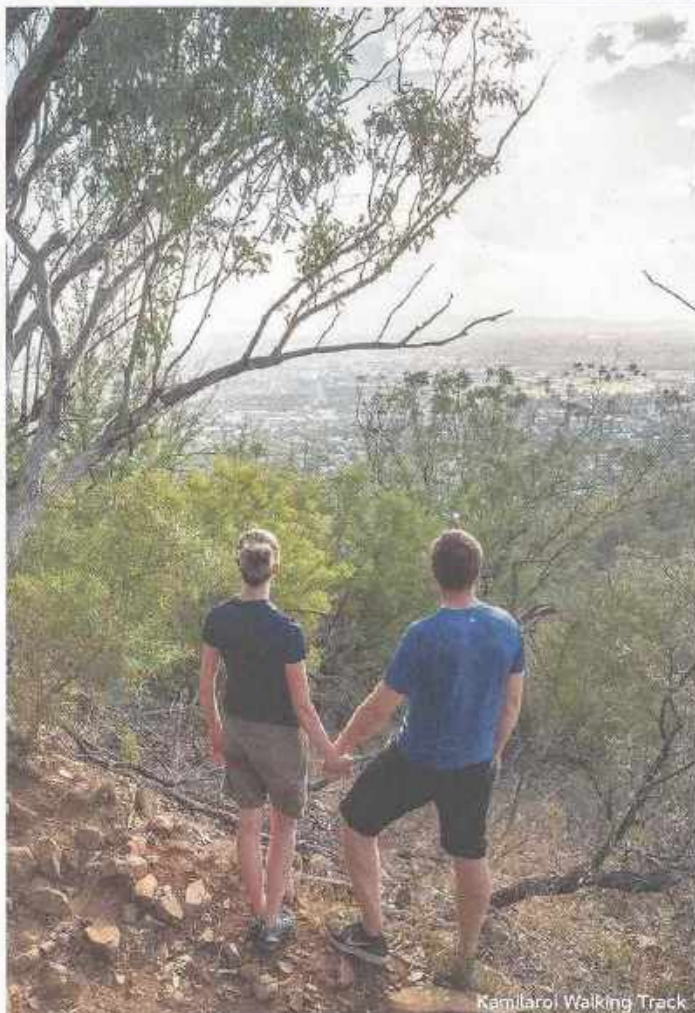
Chaffey Dam



Tamworth & Kootingal Horse Riding Adventures

Australian Equine and Livestock Events Centre (AELEC)

While Tamworth is famous for its country music, it has also gained national and international recognition for horse sporting excellence. The unmissable AELEC hosts over 50 events every year including; show jumping, rodeos and campdraft, eventing and much more. If you're a horse lover or just curious to experience the thrill of watching these magnificent creatures in action, AELEC is a must visit.



Kamilaroi Walking Track



Australian Equine and Livestock Events Centre



A DESTINATION FOR FOODIES

Tamworth is a foodies' delight, a city that's big on flavour and boasts a wide variety of dining experiences for all tastes.

If you're looking for an Instagram-worthy brunch, fantastic coffee, leisurely lunch in the sunshine, or a sophisticated dinner complete with award-winning wine list, you're bound to find something to satisfy your cravings in Tamworth. The only problem will be deciding where to go!

The region is home to countless food producers, ensuring fresh, seasonal produce is bountiful. Tamworth and surrounds' specialties include; award-winning milk and dairy products, rainbow trout, raw honey, wine and farm-to-plate fruit and vegetables. And if you're looking for a great steak you're in for a real treat. Some of the world's finest meat is produced in the Tamworth region including organic beef and lamb as well as pasture-reared free-range pork.

Cafés: Café culture is booming in Tamworth with plenty of choices to explore, coffee connoisseurs are spoilt for choice! There are cafés for all tastes including arty café gift shops, family-friendly cafés, plus great places for business meetings and catch-ups or to simply relax, unwind and savour some home-baked treats.

Restaurants: Discover cuisine inspired by the world's great culinary traditions including French, Thai, Japanese, Chinese, African, Mexican, Columbian, Indian and Lebanese, just to name a few. From fine dining to street food and everything in between, you'll love exploring Tamworth's extensive range of restaurants.

Pubs, bars and clubs: There's a real buzz in the Tamworth CBD as a new wave of boutique wine, beer and whiskey bars open their doors. This is in addition to the stellar line-up of pubs and clubs, where you will find hunger-curbing pub fare at its very best and an ideal place to relax with a few drinks after a long day spent exploring.

For a complete listing of eateries and venues in the Tamworth region, visit destinationtamworth.com.au/eat



Delicious regional produce



Taste Tamworth Festival



DECO Wine Bar & Restaurant

DESTINATIONTAMWORTH.COM.AU



Boundary Rock, Tamworth

MAKE MEMORIES IN THE TAMWORTH REGION

If you're a keen photographer or just love sharing your holiday snaps with friends and family, the Tamworth region is home to some sensational photo spots!

Here is a list of the top, must-see photo opportunities in the region – see how many you can capture whilst visiting. Be sure to use our tags in your pics on social media! **#tamworthnsw #manillansw #nundlensw #barrabansw**

1. The Big Golden Guitar: No visit to the Country Music Capital is complete without snapping a selfie in front of one of Australia's most iconic "big things".

2. Oxley Lookout: With sweeping views over Tamworth and the plains beyond, this is a beautiful spot for a photograph, particularly at dusk or dawn.

3. King George V Avenue: You won't feel as though you're literally moments from the heart of Tamworth's CBD on this gorgeous tree-lined avenue, a spectacular location for photos. You might recognise the English Oak trees forming a natural archway over the road from the Angelina Jolie-directed film "Unbroken", parts of which was filmed in the region.

4. Tamworth Post Office: The Victorian Italianate, two-storey building and clock tower has a distinct presence in the CBD and makes for a great shot. Try shooting from Fitzroy Street Plaza to take in the Peel Street palm trees for a truly 'Tamworth' picture!

5. Hanging Rock Lookout: A little off the beaten track, this lookout is well worth the journey to enjoy the views and photo opportunities aplenty from one of the region's highest vantage points.

6. Manilla Street, Manilla: Thanks to the brilliant display of period architecture, this historic main street makes a great backdrop for streetscape photos.

7. Australian Equine and Livestock Events Centre (AELEC): A state-of-the-art equine and livestock events venue, AELEC has gained international recognition. This massive complex has become an icon of Tamworth and is a must-see.

8. Sheba Dam's Jetty, Hanging Rock: This hidden oasis is the place of Insta-dreams; tranquil, tree lined and offering the perfect backdrop for an arty shot.

9. Barraba Silo Project: This is public art on a giant scale! No trip to Barraba is complete without taking a snap of this mural spanning three enormous grain silos.

10. Share your favourite! Share your photos of the hidden gems you've uncovered during your stay in the Tamworth region.



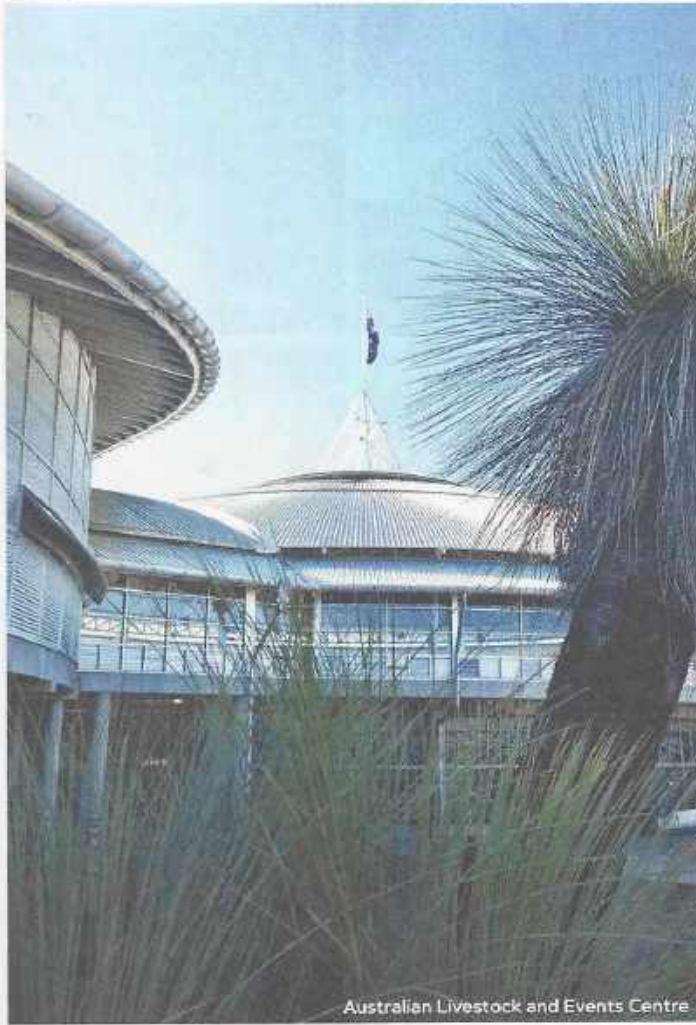
Hanging Rock Lookout



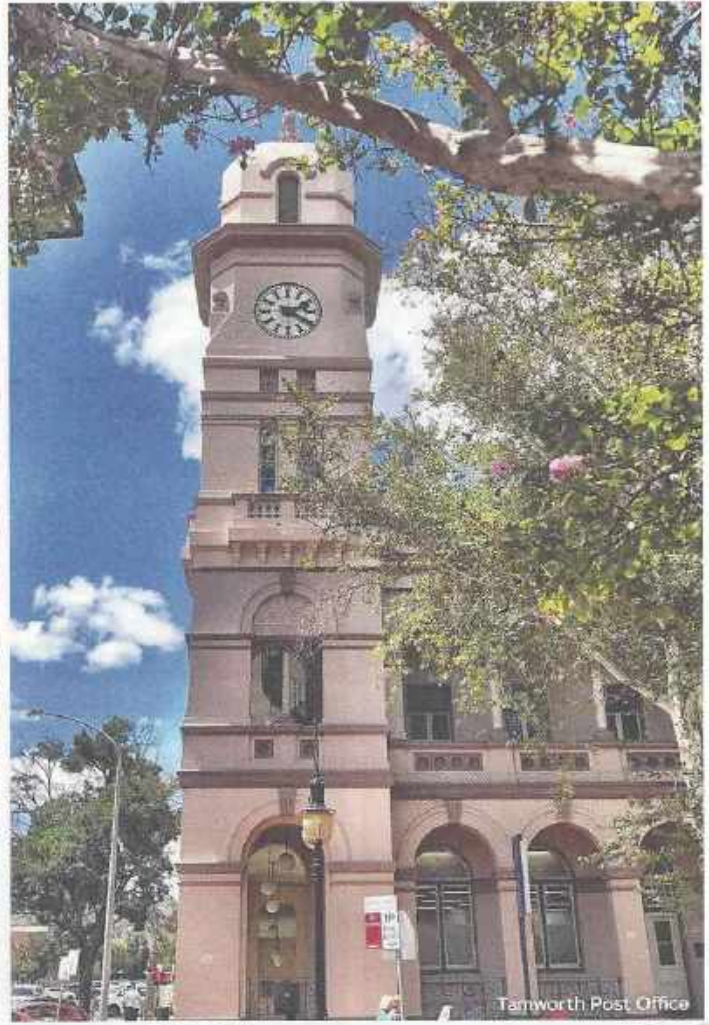
Sheldale Dam



Barraba Silos



Australian Livestock and Events Centre



Tamworth Post Office

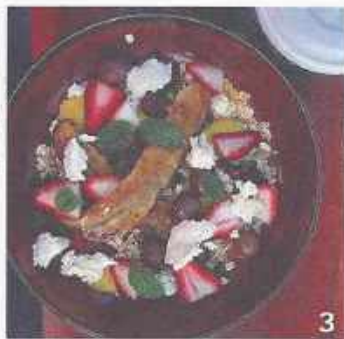
DESTINATIONTAMWORTH.COM.AU



1



2



3



4



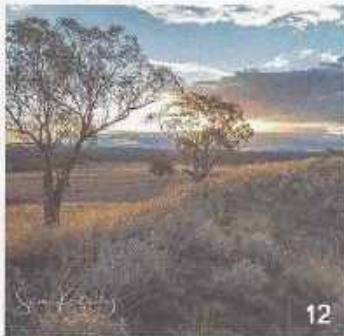
5



10



11



12



17



18



19



20



23



24



25



26



29



30



31



32



37



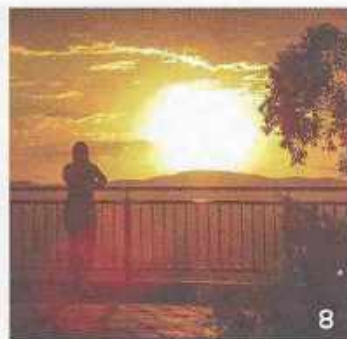
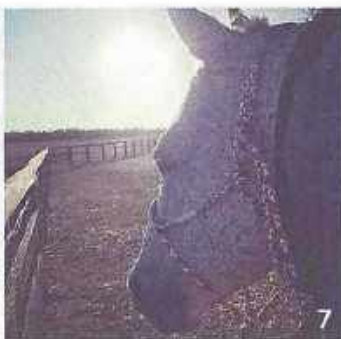
38



39



40



- ### THE TAMWORTH REGION THROUGH YOUR EYES:
1. exchangestoresnundle. Nundle.
 2. australianagent. Tamworth.
 3. hopscotchrestaurant. Tamworth.
 4. reneecallaghan. Tamworth.
 5. Julieebf. Manilla.
 6. sjackmasseywoodwork. Tamworth.
 7. littlekdesignsequine. Tamworth.
 8. aya_australia. Tamworth.
 9. tahliaadaniellephotography. Tamworth.
 10. eeram5. Tamworth.
 11. mickgorman. Tamworth.
 12. sueretschlag. Barraba.
 13. tenillejenkins. Tamworth.
 14. phelps6746. Chaffey Dam.
 15. faribabaraz. Calala.
 16. karleecole. Tamworth.
 17. faribabaraz. Tamworth.
 18. becvacclavik. Tamworth.
 19. donnacarroll. Tamworth.
 20. craighornton1. Manilla.
 21. nash. Attunga.
 22. shaunlanephotography. Tamworth.
 23. ch_boutique_hotel_tamworth. Tamworth.
 24. manda_panda43. Tamworth.
 25. meerkatharry. Chaffey Dam.
 26. ctahliadaniellephotography. Tamworth.
 27. heartmindjournal. Tamworth.
 28. jamienvet. Tamworth.
 29. beckyetal. Tamworth.
 30. theterracetamworth. Tamworth.
 31. cexchangedtoresnundle. Nundle.
 32. mollymaysmanilla. Manilla.
 33. Claudia_monique_rose. Mt Kaputar National Park.
 34. becvacclavik. Tamworth.
 35. faribabaraz. Tamworth.
 36. faribabaraz. Manilla.
 37. minmed. Tamworth.
 38. andrewpearsonphotography. Tamworth.
 39. longyardgolf. Tamworth.
 40. hamstagram_l. Kootingal.
 41. manda.panda43. Tamworth.
 42. forwardtravellaustralia. Nundle.
 43. sageandmystic. Hanging Rock.
 44. rach95. Chaffey Dam.

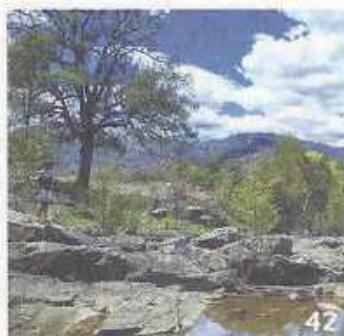




IMAGE: Barraba Silo Art

Barraba Silos

BARRABA

Just over 60 minutes drive from Tamworth, you will discover the welcoming community of Barraba. Surrounded by some of Australia's most picturesque and productive grazing land, Barraba has a proud farming heritage. The town is also becoming a well-known arts and culture hub, with a number of galleries and local artists as well as annual exhibitions, markets and workshops. The southern entrance to the town is testament to a fantastic community project, the result being the stunning silo artwork.

Barraba is a destination where you can simply kick-back and unwind. While there is plenty here to see and do, even just a stroll around the town is enough to lull you into its laid-back and peaceful pace of life.

Soak-up the quaint country-town ambience with Victorian, Edwardian and Art Deco architecture lining beautiful Queen Street. If you enjoy shopping in independent boutiques, you'll be in for a treat with some of the region's most delightful stores calling Barraba home. Here you will discover a range of gifts, fashion, homewares and kitchenware along with local art and handmade items, many of which you won't find anywhere else.

If your idea of relaxing is to get active in the great outdoors, there's plenty to keep you occupied in Barraba. From bushwalking to fossicking, Barraba offers countless outdoor activities for the whole family to enjoy. Barraba is also a bird watcher's paradise, with over 14 bird watching routes to explore and 190 species calling the area home.

Choose to do as little or as much as you like, one thing is for certain – a visit to Barraba always guarantees a warm welcome, with proud and friendly locals only too happy to help you make the most of your visit to their delightful little town.

FAMILY FUN

Take a step away from the hustle and bustle of everyday life, and enjoy quality family time in Barraba. This is the kind of place where you can truly relax, let the kids run, explore and ride their bikes stress-free while you indulge in life's simple pleasures. Enjoy a swim at the award-winning **Barraba Swimming Complex** – complete with giant waterslide and pool toys, plus a hydrotherapy pool that's open all year round – or pack a picnic for a barbecue with a view at **Adam's Lookout**. Barraba also has a skate park and several playgrounds including **O'Meara Park** where young children will enjoy the old steam engine.



Split Rock Dam



The Claypan



Barraba Historical Museum



Horton Falls

HISTORY AND HERITAGE

Much of Barraba's history is based around its agricultural past, and while Barraba is now recognised as one of the nation's top cattle producing areas, it originally prospered as a destination for gold, copper and clay mining, as well as wool and wheat production.

Barraba is home to the Kamilaroi/Gomeri people. In fact, the word 'Barraba' is an Aboriginal word meaning 'camping place on the edge of a river'. European settlers first visited the area in 1827, before the first pastoral licences were granted in 1836, and Barraba was officially named a town in 1885.

Discover Barraba's history at the **Nandewar Historical Society Museum** or the now legendary **Shed of Knowledge**, a fascinating personal collection of memorabilia, family histories and vintage pieces.

OUTDOOR ADVENTURE

Surrounded by National Parks and expansive wide-open spaces, Barraba is a great base for those who love outdoor adventure. It is located in the Nandewar Ranges and offers an abundance of natural attractions to explore including the extinct volcanic area of **Mount Kaputar National Park**, **Rocky Creek Glacial**

Area, **Horton Falls National Park**, **Sawn Rocks**, **Split Rock Dam** and **Glenriddle Reserve**.

Disconnect from the stresses of everyday life and reconnect with nature as you experience bushwalking, fishing, bird watching, camping and fossicking immersed in the beauty of Barraba's surrounds. One visit and you'll agree that Barraba is a fantastic destination for the avid adventurer and nature lover.

ART & CULTURE

Despite being home to just over 1,400 people, Barraba is a dynamic creative community with a number of great annual events, including the popular **Frost Over Barraba Arts Festival**.

The **Fuller Gallery and Claypan**, a community-run gallery and potter's guild, is where locals share their knowledge and showcase locally made arts and wares. **The Playhouse Hotel**, the restored boutique hotel, is undoubtedly the cultural centre of the Barraba community; a unique space offering theatre performances, events and conference facilities as well as boutique accommodation, great meals at its in-house café, regular pop-up art installations and a unique gift store.





Bird watching

Finally, the **Barraba Silos Mural**, completed by Sydney-based artist Fintan Magee in 2019, is another testament to the town's vibrant arts culture, helping Barraba make its mark on the regional art scene.

FOOD

Regardless of whether you're spending a day, week or simply passing through on your travels, you'll be delighted by Barraba's dining options. From gourmet groceries and farm-fresh local produce to bakery delights that will leave you nostalgic for your beloved childhood treats, good old-fashioned takeaway, pub classics, outstanding coffee and of course, the local Chinese restaurant, eating out in Barraba is always a pleasure. The best part? The country hospitality makes you feel right at home with warm and friendly service that is bound to have you coming back for more.

For points of interest locations, further details and to discover more about Barraba and its history, check out destinationtamworth.com.au/barraba



The Polkadot Coffee Room



Queen Street

IMAGE: Peter Dryer



Fuller Gallery

DESTINATIONTAMWORTH.COM.AU



MANILLA

While Manilla has long been a go-to destination for adventure lovers from around the world, this historic town offers so much more for visitors to see, taste and explore. World class paragliding, hang gliding and sailplane gliding are just the beginning. Embracing its history and undeniable sense of community, Manilla is a must-visit for anyone with an interest in heritage and antiques, with a number of museums, antique stores and annual events. One thing is for sure, you needn't be a thrill seeker to delight in the best of Manilla!

Manilla is located only a 30-minute drive from Tamworth, and boasts a distinct personality all of its own. With stunning displays of period architecture along the main street, meandering rivers just moments from the town centre and an eclectic array of shops and cafés, Manilla captures the essence of a bygone era.

While it's fast evolving with a growing line-up of eateries, boutiques and accommodation providers, Manilla's unique appeal lays in the warm welcome of its locals, adventurous spirit and boundless natural beauty.

A simple stroll along **Manilla Street** is an experience in itself, with historic Victorian and Art Deco façades lining the footpath. Be sure to look up and take in the grandeur of decades and

centuries past with leadlight windows, wrought-iron balconies and ornate verandahs creating a unique shopping ambience. True to Manilla's quirky style, you'll find one-of-a-kind shopping and friendly locals waiting to assist you.

Regardless of whether you're looking for a hearty meal or a place to relax and stretch your legs by the river, outdoor adventure, a top fishing spot or a great coffee while you plan your next road trip, Manilla is guaranteed to deliver. What Manilla lacks in size, it certainly makes up for in character, charm and unique experiences!

FAMILY FUN

Remember the family holidays of your childhood? The ones where the days seemed endless as you ran, swam, played and soaked up the sunshine? Manilla is the perfect place for families to create those much-loved holiday memories at **playgrounds**, the **Manilla Weir**, the **Memorial Swimming Pool**, **skate park** and **road safety bike park**. Unwind, reconnect and enjoy life's simple pleasures together.

HISTORY & HERITAGE

Forming a key part of the town's landscape, the Manilla and Namoi Rivers are integral to the story of Manilla - it was at the



Paragliding



Molly May's



Manilla Street

junction of these two rivers that the town was born. For many hundreds if not thousands of years, the site was a campsite for local Indigenous tribes and later in the 1850s, for teamsters and bullock wagons.

There is so much to learn about Manilla's fascinating past, with historic buildings, monuments and museums that help tell the story of this quaint town. Make sure you explore the **Manilla Heritage and Machinery Museums**, or take the Heritage Walk self-guided tour (more details available at the **Manilla Visitor Information Outlet**). The whole family is sure to find something of interest thanks to Manilla's colourful past!

OUTDOOR ADVENTURE

If outdoor adventure is what you seek, Manilla is the perfect base for you to explore the nearby **National Parks**, dams, lake and rivers including **Lake Keepit**, **Split Rock Dam** and **Warrabah National Park**. Venture just beyond the town borders and you will discover incredible playgrounds for boating, hiking, photography, fishing, camping, flying sports and much more. There's also the nine-hole **Manilla Golf Course** for those who prefer a more leisurely way to enjoy the outdoors.

ART & CULTURE

With an unhurried pace of life and abundance of natural beauty, it's no surprise Manilla inspires creatives and artists, with a number of working artists calling the town home.

FOOD

Fancy an excellent coffee and slice of homemade cake? Perhaps a hearty pub meal or fresh ingredients to create a gourmet picnic? Whatever your preference, there's something for all tastes in Manilla. Combining local produce and good old-fashioned country hospitality, Manilla is a great spot to savour a leisurely meal any time of day with cafés, a bakery, pubs and clubs all at your fingertips.

Don't forget, the **Manilla Museum Markets** are held on the first Saturday of every month and are a great place to pick-up quality local produce with stalls offering honey, eggs, home cooking, Devonshire Tea, plants, second hand books, handicrafts and more. It's a wonderful community event and visitors are always welcome!

For points of interest locations, further details and to discover more about Manilla and its history, check out destinationtamworth.com.au/manilla



Peel Inn Hotel

NUNDLE AND HANGING ROCK

With a population of just under 500 people, Nundle and Hanging Rock are a treasure-trove of history, culture and adventure. The villages of Nundle and Hanging Rock are just 10km apart and yet the 600-metre elevation difference between the two means that they each have a completely different feel and offering.

A thriving, creative and dynamic village, Nundle offers visitors a unique destination that is both relaxing and invigorating - a beautiful contrast that makes it an absolute must-see. One of the first things any visitor will notice upon arriving in Nundle is the community spirit; you can't help but feel the pride of the locals who passionately embrace their charming village.

Nundle holds an incredible number of annual events that draw crowds of thousands from around Australia and the world (see page 58). Highlights on the annual events calendar include the **Nundle Go for Gold Easter Festival**, a two-day celebration of the village's mining history with market stalls and live music, and **The Great Nundle Dog Race**, held annually to raise funds for the local primary school for over 40 years. It's a fun-filled day, with pooches racing and jumping in numerous categories for great prizes.

Nundle and Hanging Rock are both surrounded by valley vistas, fertile farmland and the imposing rocky hillsides of the Great Dividing Range, making a road trip well worthwhile for the scenery and immersion in nature alone. Add in the close-knit village atmosphere, great food and coffee, boutique shopping as well as the incredible range of things to see and do and it's evident why Nundle has become one of the region's most popular destinations!

The unique layout of the village centre makes shopping in Nundle a pure delight. Meander the quiet streets and explore an eclectic collection of stores as you uncover everything from original art and homewares to skincare and fashion. Offering real service, passionate craftspeople and unique items that can't be found anywhere else, Nundle embodies the best of country town shopping.

Located a scenic 50-minute drive from Tamworth, Nundle and Hanging Rock is an ideal day trip for travellers.

Although, with a wide selection of accommodation options offering everything from boutique guesthouses and B&Bs to bunk houses and riverside campsites, as well as too many experiences to fit into a day, you'll be tempted to extend your stay!

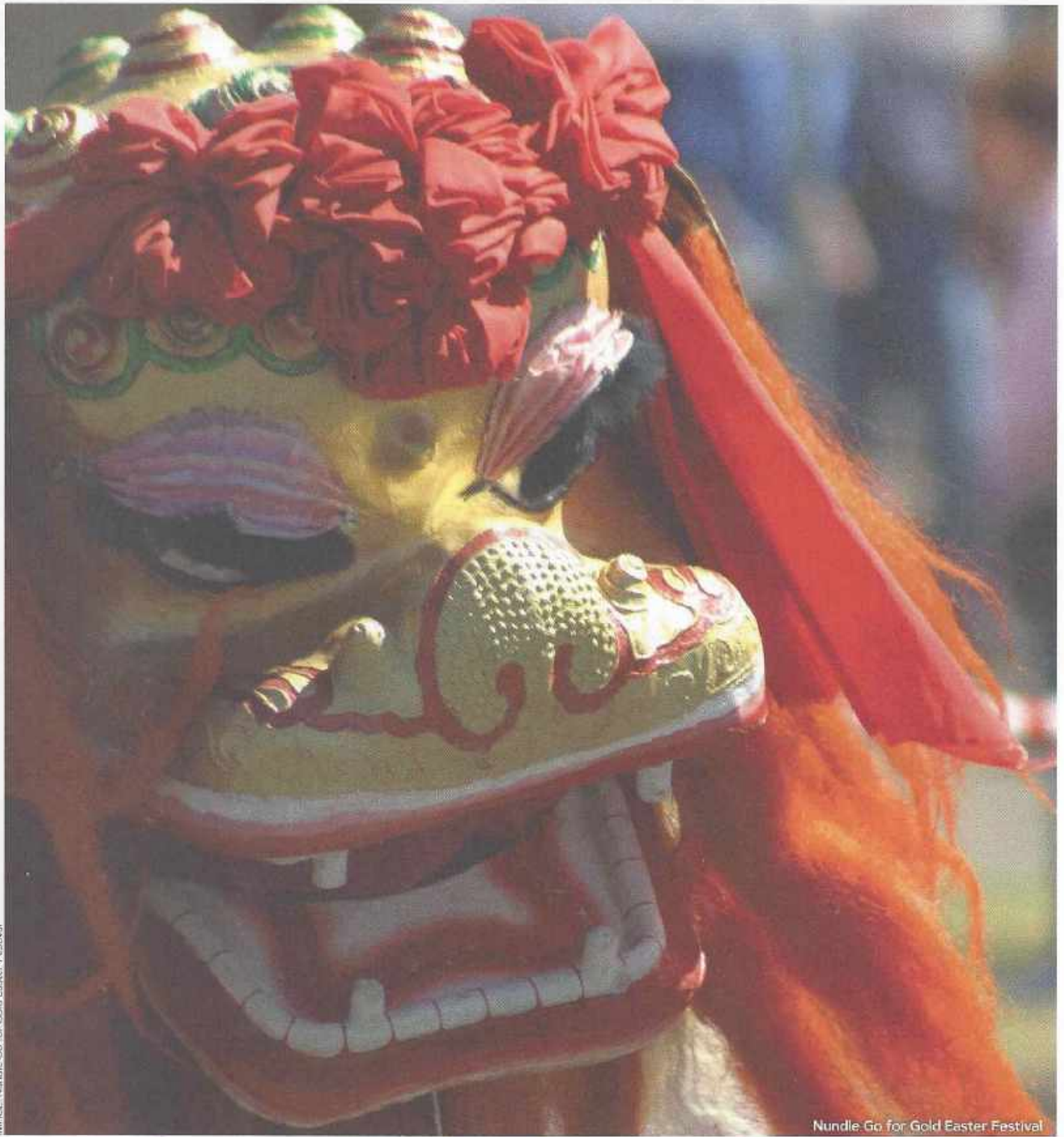


IMAGE: Nundie Go for Gold Easter Festival

Nundie Go for Gold Easter Festival



Mount Misery Gold Mine Museum



The Great Nundie Dog Race

Credit: The Great Nundie Dog Race



Chaffey Dam

FAMILY FUN

Regardless of whether it's for a day trip or longer stay, you will have no trouble finding plenty to keep the whole family entertained in Nundle. Explore the village centre at your own pace, play, learn about the area's fascinating history or simply get back to nature and recharge in the fresh mountain air. The unique **wool-themed Nundle Playground** is a one-of-a-kind play experience that will keep the little ones entertained for hours. Located right in the centre of the village next door to the playground, **Nundle Pool** is an ideal refuge to cool off on those warm summer days. If you're looking for a picnic location with an epic view, make the 10-minute drive from Nundle to the **Hanging Rock Lookout** for spectacular panoramas over the Peel Valley.

HISTORY & HERITAGE

The famous 'Hills of Gold' form a key part of the area's identity. Gold was discovered at Hanging Rock in 1851, before Nundle's establishment in 1854; both flourished during the gold rush era with thousands of miners calling the area home. There are numerous buildings, monuments and signage to remind visitors of the area's past as well as several places to hire gold panning

equipment – be sure to drop into the **Visitor Information Outlet** to get hot tips on where you can try your luck!

A visit to Nundle is like stepping back in time, with some local businesses having traded for over 120 years, plus a museum dedicated to the gold rush era and an operating woollen mill. Visit historical cemeteries in both Nundle and Hanging Rock, where you'll discover the final resting places of both past residents and visitors to the area, including a memorial to Mrs Ashton, the wife of Ashton's Circus founder James Henry Ashton.

Nundle's rich history is also evident in the village streetscapes which offer a mix of Victorian and Art Deco architecture, effortlessly combined with industrial style in the form of re-purposed shipping containers and classic country-town Australiana vibes. Learn more about heritage buildings in Nundle itself by picking up a map from the Nundle Visitor Information Outlet.

OUTDOOR ADVENTURE

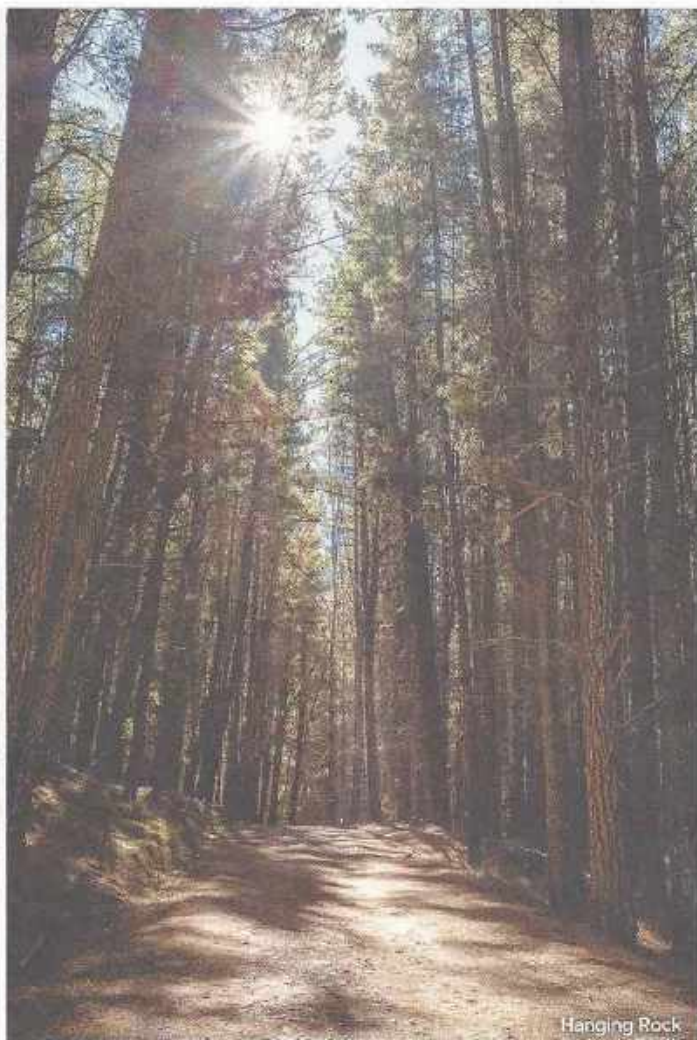
A visit to Nundle and Hanging Rock means being surrounded by natural beauty. Here, even a simple stroll by the Peel River is an experience to remember! If outdoor adventure is your



Art-en-ciel Trout Farm



Gil Bennet Rocks, Gems & Minerals Collection



Hanging Rock

style, these two gems will no doubt impress with a huge variety of outdoor pursuits including kayaking, fishing (including at a local trout farm), hiking, swimming and camping right on its doorstep. Nundle is also a popular destination for cyclists, motorbike enthusiasts and car clubs from all over the country.

If you enjoy a round or two, **Nundle Golf Club** boasts a most scenic course. Operating on an honesty box system, everyone is welcome to play throughout the week with competitions being held on Sundays.

If you're looking for a great place to switch off, enjoy the sounds of nature and get away from it all, **Sheba Dams** at Hanging Rock is popular with campers, fishermen and families and is perfect for a cooling dip. Sheba Dams is powerboat free meaning it's perfect for a relaxing kayak, fish, swim or paddle in the shallows. If you need more room to move, head to **Chaffey Dam** (between Nundle and Woolomin) - a hive of activity on weekends attracting water skiers, campers and fishers.

ART & CULTURE

Nundle is home to a range of talented artists and craftspeople and hosts frequent live music events. Creativity and entrepreneurial spirits thrive in this close-knit community,

which truly outdoes itself when it comes to its arts and cultural offerings. Nundle is also a popular destination for art and craft retreats, so if you're looking to flex your creative muscle, be sure to check out the Destination Tamworth website for a list of upcoming events.

For any geology lovers, the **Gil Bennet Rocks, Gems & Minerals Collection** is one of the most comprehensive collections in the world. The collection is the work of Gilmore Thomas Bennet who spent over 20 years collecting specimens from all over Australia and other parts of the world.

FOOD

If you're a foodie, consider yourself spoilt for choice in Nundle. Woven in amongst the village streets and surrounding hillsides, you'll find a surprising variety of eateries that will have you coming back for more. Whether it's a city-style brunch in the sun, long lazy lunch with friends, paddock-to-plate experiences or simply a great coffee and cheeky slice of cake, Nundle has it all.

For points of interest locations, further details and to discover more about Nundle and its history, check out destinationtamworth.com.au/nundle



CARAVAN AND CAMPING

The Tamworth region is a popular destination for caravaners and campers, and for good reason! Not only does it offer some truly remarkable and picturesque camping locations, the region is also home to some RV Friendly Towns plus a great selection of tourist parks which offer everything from basic tent sites and powered RV sites to deluxe ensuite cabins.

Check out a complete listing of tourist parks in the accommodation listing or visit

destinationtamworth.com.au/caravan-camping

Some of the region's most popular camping locations include:

Bendemeer: A caravan and camping rest stop that's perfectly located just minutes' walk from the local pub and general store.

Bowling Alley Point at Chaffey Dam: Relax at one of the region's most popular fishing and boating destinations, complete with unpowered sites and bush camping, barbecues, showers and toilets.

Lake Keepit: Whether you camp or stay in the on-site cabin accommodation, this is a top spot for water sports of all kinds, fishing, picnics and barbecues.

Ponderosa Park: Set amongst a cluster of fragrant pine trees, this is a place to fully escape the everyday. Toilets and barbecue facilities available.

Sheba Dams: A remarkably scenic camping spot at Hanging Rock, perfect for swimming and fishing. The area offers toilets, tables and an undercover cooking shed.

Split Rock Dam: Bush camping and powered sites are available at this picturesque spot near Manilla, complete with barbecues, showers and toilets.

Warrabah National Park: Camp along the tranquil Namoi River with picnic tables, barbecues and toilets available. A great spot for bushwalking, canoeing and swimming.

Find out more about caravan and camping adventures from our dedicated brochures available at the **Visitor Information Centre and Regional Outlets**.

Dump Points in the Tamworth Region:

Barraba: Behind council depot, near 77 Cherry Street

Manilla: Coronation Park, near 288 Charles Street

West Tamworth: 350 metres west off Goddard Lane
near Gunnedah Road

South Tamworth: South Tamworth Lions Club Rest Area,
near 477 Goonoo Goonoo Road

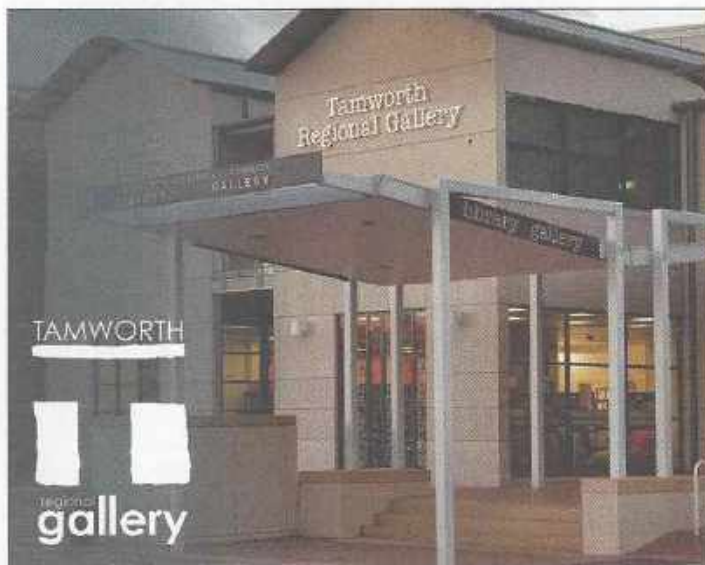
East Tamworth: Rotary Rest Area, near 505 Armidale
Road

TAMWORTH

Choose your experience



Tamworth Miniature Railway



TAMWORTH REGIONAL GALLERY

Keeping the arts and culture accessible to all.

Regularly hosting distinguished national and international art exhibitions and workshops for all ages, Tamworth Regional Gallery is the second oldest regional gallery in New South Wales.

Come in today, and don't forget to visit the unique gift shop!



A 466 Peel Street, Tamworth
P 02 6767 5248
W www.tamworthregionalgallery.com.au

TAMWORTH POWERSTATION MUSEUM

You know Tamworth as the Country Music Capital, but do you know it is also the First City of Light?

Explore Tamworth's place in national history at Australia's only dedicated electrical museum. See historic steam engines in operation plus many other electrical appliances from the early days.

A 216 Peel Street, Tamworth
P 02 6766 8324
W www.tamworthpowerstationmuseum.com.au



THE WELDER'S DOG, TAMWORTH

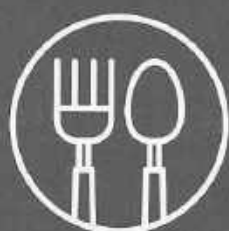
Opened in July 2017, The Welder's Dog Tamworth is located in a converted old drive-thru Rural Produce Store that had a long history in the city. We offer Australia's best independent Craft Beers, local spirits and a good selection of wines and ciders. Something for everyone!

Our BYO food policy, and a build your own cheese platter fridge, are a fun addition to The Welders Dog and why we are the perfect place for a sunny afternoon in Tamworth, bookings are welcome!

A 37 Dowe Street, Tamworth
P 0417 731 035
E accounts@theweldersdog.com.au
W www.theweldersdog.com.au



THE WELDER'S DOG



THE PUB GROUP

DISCOVER A NEW LEVEL OF TASTE.



THE LONGYARD

(02) 6765 3411
LONGYARDHOTEL.COM.AU

THE PUB

(02) 6765 5655
THEPUB.COM.AU

SOUTHGATE INN

(02) 6765 7999
SOUTHGATEINN.COM.AU

FAMILY HOTEL

(02) 6765 7722
THEFAMILYHOTEL.COM.AU



CARMEN'S RESTAURANT

Visit Carmen's Restaurant for a little taste of Italy right here in Tamworth.

With intriguing and tantalising flavours showcased on the extensive menu, lovers of Italian cuisine will be right at home trying both classics and Carmen's signature dishes. Don't forget to try the New England's best house made gelati!

Ask us about our Incredible lunch specials.

Open for lunch 7 days. Open for dinner, Mondays to Saturdays.

Carmen's
A LITTLE TASTE OF ITALY

A 2-24 Spains Lane, Tamworth
P 02 6762 6700
E enquiries@carmens.net.au
W www.carmens.net.au



STOCKMAN'S MOTEL

We are situated 7 km from the centre of town on a large rural acreage with tranquil panoramic views. Guests can relax and unwind while still enjoying the convenience of being close to town.

The motel is situated 3 km from Tamworth's AELEC and 3 km from Tamworth Regional Entertainment and Conference Centre.

Accommodation is large, modern and country friendly. We have a purpose designed disabled unit available if needed.

All rooms have ample parking right outside the door. In addition there is 10 acres of FREE parking for trucks, trailers or buses.

A generous country cooked breakfast or a satisfying reasonably priced evening meal can be delivered to your room or you can choose to eat in our popular onsite 'Carmen's' Italian restaurant, which serves homemade pasta and gelato and brewed coffee and also has a fully stocked bar.

Bookings are available through all major booking agencies and directly through our web site www.stockmans.net.au

A 2-24 Spains Lane, Tamworth
P 02 6765 8525
E enquiries@stockmans.net.au
W www.stockmans.net.au

Carmen's
A LITTLE TASTE OF ITALY



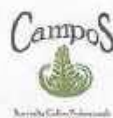
COFFEE • FOOD • WINE • GIFTS • ART

WELCOME TO THE TERRACE

Conveniently situated on the edge of the Tamworth CBD, overlooking Bicentennial Park.

The Terrace is the perfect cafe and boutique gift store for a relaxing catch up with family and friends - breakfast, lunch or Campos coffee and T2 teas - in either one of our dining rooms or on the large deck overlooking the park.

A 73 - 75 Kable Avenue, Tamworth
O Mon - Fri 8am - 3.00pm
 Weekends 8am - 3.30pm
P Bookings 02 6766 6076
W www.theterracetamworth.com.au



TUDOR HOTEL, TAMWORTH

The Tudor Hotel Tamworth is located at the heart of our beautiful country city. It is an icon of the main street and is renowned for good food, great location and friendly staff.

Our newly renovated 4 story hotel provides a modern and fresh feel and is the perfect venue to catch up with family and friends. We pride ourselves on our menu which showcases local and Australian produce.

There really is something for everyone with our indoor and alfresco dining, rooftop garden, budget accommodation, latest TAB facilities, outdoor VIP lounge and spacious functions rooms. We are a family friendly hotel which provides a comfortable atmosphere and ensures you have a great experience every time you visit.

A 327 Peel Street, Tamworth
P 02 6766 2930
E info@tudorhoteltamworth.com.au
W www.tudorhoteltamworth.com.au



Tudor Hotel
Tamworth

GOONOO GOONOO STATION

Experience Luxury Accommodation

Comprised of extensive landscaped gardens, lavish dining and event spaces and ample accommodation in a completely restored 19th Century village, Goonoo Goonoo Station is simply a one of a kind location.

Offering a selection of luxury accommodation options across an extensive range of restored heritage buildings all with access to five-star luxuries including heated swimming pool, tennis court and guests lounge - a stay at Goonoo Goonoo Station is perfect for a weekend or week-long escape.

- * Sydney Morning Herald Good Weekend 2018, 52 Weekends Away
- * Number 1 Hotel in Tamworth, Tripadvisor

www.ggstation.com.au





THE SERVICES GROUP

- Tamworth Services Club
- The North Tamworth Bowling Club • Manilla Services Club

The Services Group consists of three fantastic clubs located in the Tamworth region. The signature club, Tamworth Services Club, is located on Marius St in the heart of Tamworth. If lawn bowls is your thing, visit North Tamworth Bowling Club on Bligh Street or get out and explore the region, and visit Manilla Services Club on Court Street in Manilla.

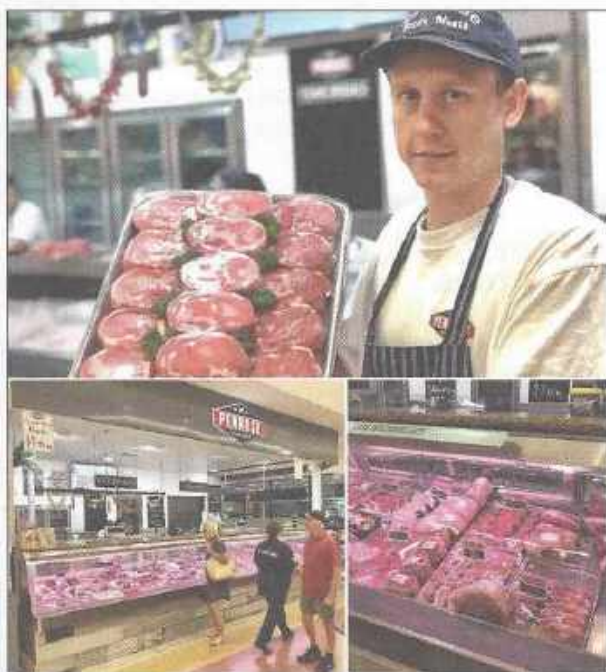
All Services Group offer a range of dining options. Tamworth Services offers a buffet restaurant and coffee shop, North Tamworth Bowlo offers a brasserie, open seven days for lunch and nightly (excluding Wednesday) for dinner. Manilla Services Club restaurant is open daily for lunch and dinner.

For your conference needs, celebrations and functions contact The Services Group.

• Tamworth Services Club
02 6766 8166

• North Tamworth Bowling Club
02 6766 1987

• Manilla Services Club
02 6785 1209



PENROSE MEATS

Located in Tamworth Square just off Peel Street, Penrose Meats is a family owned business and pride themselves on quality products and friendly service.

Locally owned and operated for over 35 years Penrose Meats have a huge range of meats for your every need. If you are after great steaks or award-winning sausages for a weekend barbeque or that family meal during the week you will get great advice and the best quality product from Penrose Meats, Tamworth.

Call in, talk to the professionals and taste the difference.

- A Tamworth Square, Peel Street
O Mon - Fri 7am - 6pm
Sat - 7am - 4pm Sun 8am - 3pm
P 02 6766 5220



GOONOO GOONOO STATION

Experience the New England's most exceptional dining destination

Located just 15 mins from Tamworth, at the magnificent Goonoo Goonoo Station, Glasshouse restaurant combines award-winning architecture, with a critically acclaimed, contemporary Australian menu, showcasing the best regional produce, in combination with a premium selection of Australian wines and beers.

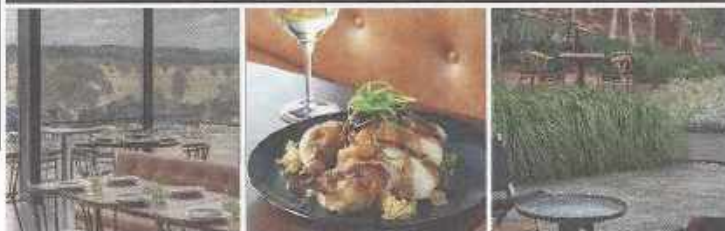
Glasshouse Restaurant Opening Hours

BREAKFAST: Sat - Sun: 8am - 11am

LUNCH: Fri - Sun: 12pm - 3:30pm

DINNER: Wed - Sat: 5:30pm - 11:30pm

Bookings Essential
www.ggstation.com.au



DESTINATIONTAMWORTH.COM.AU



AUSTRALIAN COUNTRY MUSIC HALL OF FAME (ACMF)

Take a trip down memory lane and view some of the most important country music memorabilia in Australia.

See wonderful artefacts belonging to Australian country music stars, plus items that depict our musical history. While there, be sure to take the time to *Walk a Country Mile*, an interactive history museum of Australian country music.

A 561 Peel Street, Tamworth
P 02 6766 9696
W www.countrymusichalloffame.com.au



THE OLDE FARM STORE

The Olde Farm Store is a must-see, with a large range of exciting products. See the gorgeous collectables, furniture, giftware and nostalgia plus decor items; baskets, soft furnishings, hides and skins, lighting, and art. With a range of industrial vintage through to cuddly farm animal toys, there is truly something for everyone.

Find us on Facebook



**THE
OLDE FARM
STORE**

A 9 Denison Street, Tamworth
E shop@oldefarmstore.com.au
W www.oldefarmstore.com.au



AUSTRALIAN EQUINE AND LIVESTOCK EVENTS CENTRE

The most unique livestock and events venue in Australia!

AELEC is a state of the art facility with year round action to suit any interest including:

January	ABCRA National Finals Rodeo and Campdraft
February	Landmark Classic Campdraft and Sale
March	Australian Stock Horse Society National Show
April	Australian Quarter Horse Association National Show
May/June	National Cutting Horse Association Futurity
September	Tamworth Pastoral and Agricultural Society Show
October	World Cup Qualifier Show Jumping
November	PBR

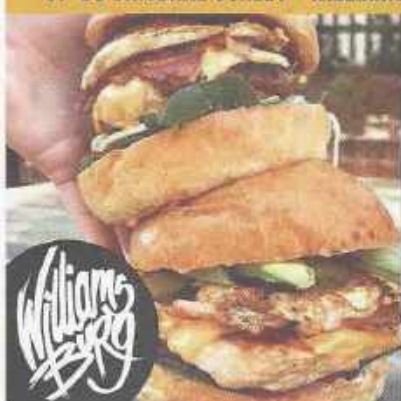
...and many others throughout the year. If you are looking for something to do whilst you're in Tamworth then AELEC is the place to go!

A 503 Goonoo Goonoo Road, Tamworth
P 02 6767 5658
E trc@tamworth.nsw.gov.au
W www.aelec.com.au





87-93 BRISBANE STREET • WILLIAMSBURGTAMWORTH.COM.AU



- GOURMET BURGERS
- SNACKS
- BEERS - COCKTAILS
- SHAKES
- COLD DRINKS
- GELATO - DESSERTS

P: 6766 3845

"TAMWORTH'S HOTTEST NEW SPEAKEASY BAR"



THE PRESS

- Whiskies
- Craft Beers
- Wines
- Spirits
- Cocktails
- Tapas menu

179 Cnr MARIUS/BRISBANE ST

Find us in the basement of the old Northern Daily Leader Building.



*The place to
Shop in Tamworth*

**FREE
PARKING
& WIFI**

**40+
SHOPS**

**follow us on
FACEBOOK**



Tamworth
SHOPPINGWORLD

Cnr Bridge St & Denne St,
West Tamworth
Phone: (02) 6763 5111
tamworthshoppingworld.com.au



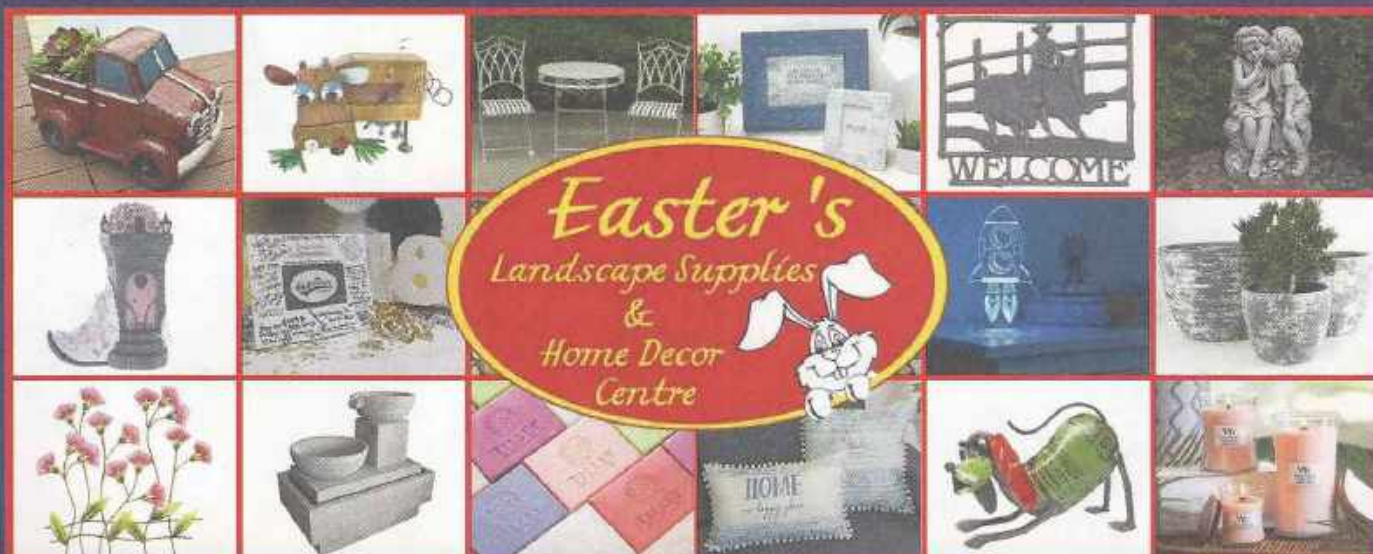
DESTINATIONTAMWORTH.COM.AU

the powerhouse MOTORCYCLE MUSEUM

OPEN 7 DAYS | 9AM – 5PM
6766 7000 | 250 Armidale Road, Tamworth

Regarded as one of the best private collections of motorbikes in Australia from the 1950s, 60s, 70s & 80s.
www.powerhousemotorcyclemuseum.com.au

Over 1000 square metres of display to view including 500 indoor



Easter's
Landscape Supplies
&
Home Decor
Centre

Water Features, Statues, Wall Art, Pots, Planters, Cushions, Candles, Diffusers, Clocks, Garden Signs, Animals, Fairy Garden Decor, Settings, Birdbaths, Celebration & Gifts, Buddhas and much more...

Follow us on
Instagram
eastershomedecorcentre
www.easters.com.au

45 HUME STREET, TAMWORTH
(Taminda) 6762 0650

LIKE US ON
facebook

Mon-Fri: 9am-5pm Sat & Sun: 9am-2pm



88.9 fm

TAMWORTH

WHEN VISITING TAMWORTH TUNE TO
THE SOUND OF THE 60s 70s 80s AND
THE BEST IN COUNTRY



TAMWORTH
REGIONAL
CONSERVATORIUM
OF MUSIC

musical adventures
start at **THE CON**

offering
**LESSONS • ENSEMBLES • CONCERTS
WORKSHOPS • MASTERCLASSES**

Tamworth Regional Conservatorium of Music is the premier music education facility in the Tamworth Region, providing outstanding individual, group and ensemble tuition to students aging from early childhood to adults. Our programs are designed to cater for a range of abilities, from beginner to advanced.

The Conservatorium presents a wide range of concerts by visiting professional musicians in the Chapel Theatre and the Capitol Theatre. Visit our website to see a full list of upcoming events. Tickets are available online.

P 02 6766 6911
E admin@thecon.com.au
223-227 Marius Street
PO Box 874
Tamworth NSW 2340
thecon.com.au



THE MILL AT LONGYARD GOLF

Located just a few minutes from the heart of the city of Tamworth, is the Greg Norman designed 18 hole course. Adjacent to the scenic course is the The Mill at Longyard Golf. The Mill features indoor and outdoor dining facilities, with a large deck overlooking the golf course and wedding garden – perfect for long lunches or functions!

Don't leave the kids at home, they can enjoy Thorny's Putt-Putt, featuring 2 x 18 hole courses; the "Dragon" course for beginners and the "Devil" course for those who like a challenge.

See our webpage for more information and opening times.

A Greg Norman Drive (entry via Longyard Drive)
P 02 6765 2988
W www.longyardgolf.com.au



Weswal Gallery W

Showcasing Australian
Fine Art and Design

10am - 4pm Thursday & Friday
10am - 2pm weekends

192 Brisbane Street
Tamworth NSW 2340
02 6766 5847

www.weswalgallery.com.au



Weswal Gallery is a 100% Australian owned and operated business. We are proud to showcase the work of local and international artists. Our gallery is a great place to see and buy art. We are also a great place to see and buy art. We are also a great place to see and buy art.

DESTINATIONTAMWORTH.COM.AU



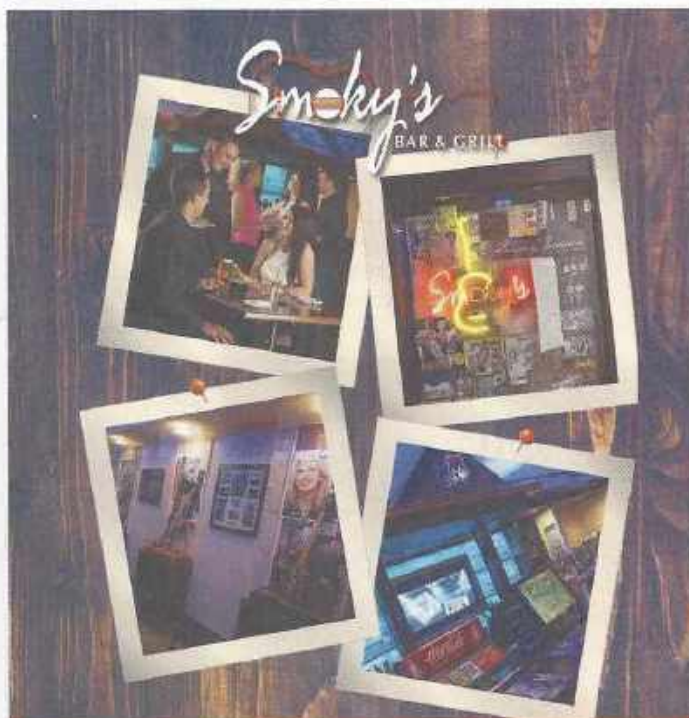
Mercure Tamworth offers sophisticated mid-scale accommodation for all occasions in a quiet location with easy access to major highways and Tamworth town centre.

Boasting 52 meticulously designed rooms, suitable for the corporate traveller and family alike. The four star hotel also features a corporate meeting room and a modern leisure area with a heated pool and gym.

Connected to West Tamworth League Club, placing you in a hub of entertainment, especially during the Country Music Festival.



Ph (02) 6765 1200 | Email HA205@accor.com
Kent Street West Tamworth



LEVEL 1, 4 KABLE AVE TAMWORTH

WESTS' DIGGERS

AN EXPERIENCE TO RETURN FOR

EAT • DRINK • RELAX

OPEN FOR DINNER FROM TUESDAY TO SATURDAY
BOOKINGS ESSENTIAL 6766 4661

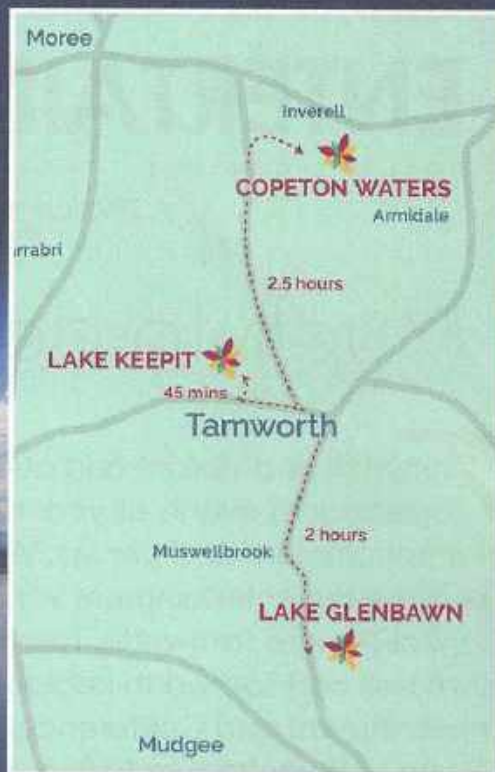


BRING THE FAMILY!

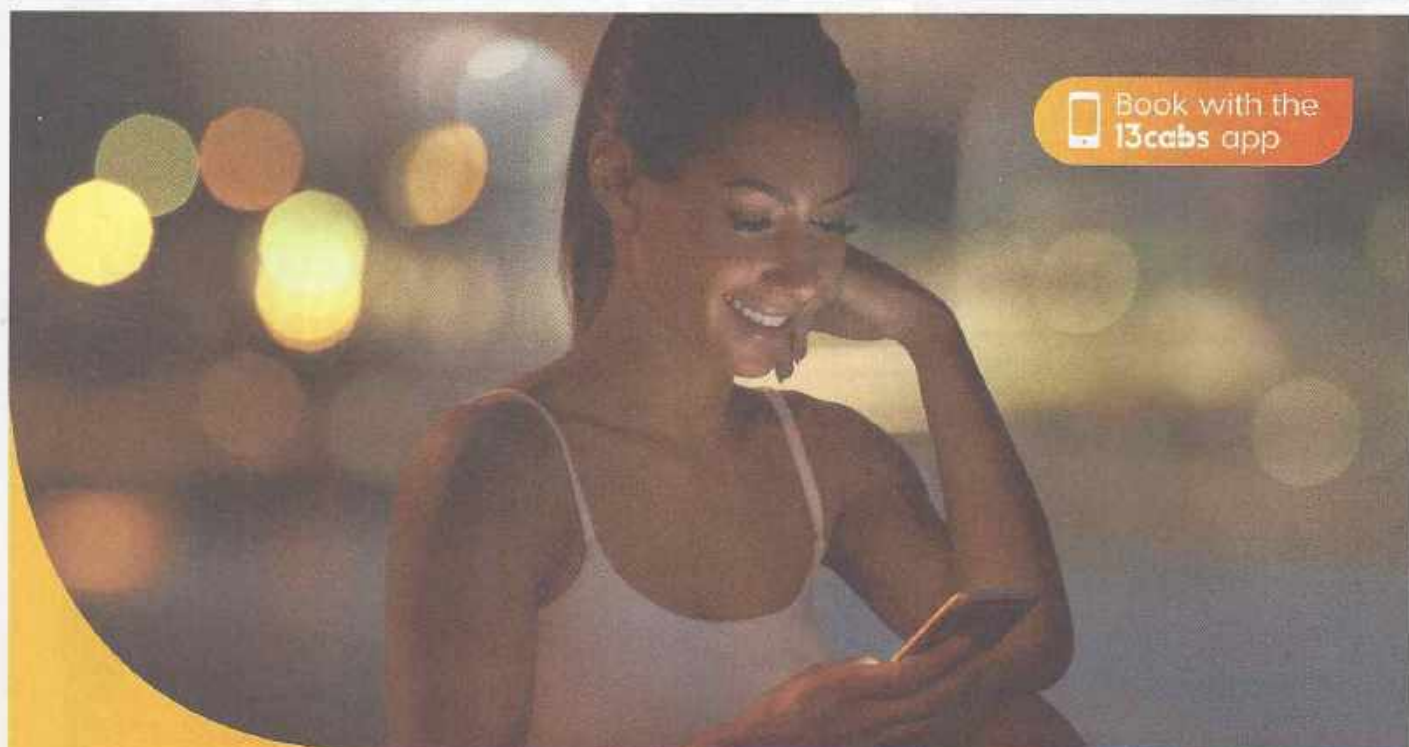
58 PHILLIP ST, WEST TAMWORTH
PH 6765 7588

Iconic fishing, boating and holiday locations.

Your back to nature getaway awaits
– choose from 37 NSW locations



reflectionsolidayparks.com.au



Book with the
13cabs app

13cabs is now in Tamworth

13cabs is your new way to book a cab in Tamworth. With the 13cabs app, you can now choose your ride, book and track your cab and even pay – all within the app. So for your cab your way, get the 13cabs app, or call 13 2227, and we'll get you there.

13cabs
☎ 13 2227

DESTINATIONTAMWORTH.COM.AU

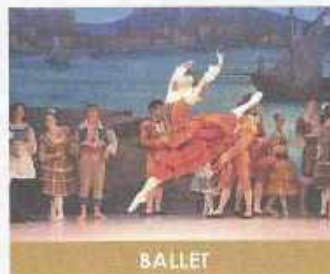
ENTERTAINMENT VENUES

TRECC | CAPITOL THEATRE TAMWORTH | TAMWORTH TOWN HALL

A Division of Tamworth Regional Council

Much to do *about* Tamworth

Tamworth is a vibrant and cultural city with a full calendar of events all year round across all types of entertainment and genres. Visit any of our three live entertainment venues; Capitol Theatre Tamworth, Tamworth Town Hall and Tamworth Regional Entertainment and Conference Centre and you're sure to find something that entertains and excites.



TRECC
TAMWORTH REGIONAL ENTERTAINMENT
CONFERENCE CENTRE

Greg Norman Drive
Tamworth NSW 2340



CAPITOL THEATRE
TAMWORTH

Level 1, Centerpoint Tamworth
Peel Street Tamworth NSW 2340



**TAMWORTH
TOWN HALL**

Fitzroy Street
Tamworth NSW 2340



To see what's on across the venues go to
www.entertainmentvenues.com.au
Phone: **02 6767 5200**

A division of Tamworth Regional Council

Discover the difference
 of Christian education -
BOOK YOUR PERSONAL TOUR TODAY

www.carinya.nsw.edu.au



Carinya is a co-educational, independent, private day school, teaching children across two campuses. At Carinya, Jesus Christ is central to the core vision of the school and our understanding of Him is embedded in our educational practices, at every level.

- AFFORDABLE, ALL INCLUSIVE FEES
- ESTABLISHING HIGH EXPECTATIONS
- POSITIONING STUDENTS FOR SUCCESS
- GROWING TO A COMMUNITY OF OVER 1,000 STUDENTS

**IT'S NEVER TOO EARLY TO ENROL
 AT CARINYA TAMWORTH**

Places are limited in the
 Prep Program (3-4yr olds), and
 Kindergarten to Year 12.

ENQUIRE NOW!

Carinya Tamworth

25 Boronia Drive, CALALA NSW 2340
 Ph: (02) 6762 0970 | E: admin@carinya.nsw.edu.au
 F: facebook.com/CarinyaTamworth

**LAUNCH OF SECONDARY SCHOOLING
 AT CARINYA GUNNEDAH**

Commencing Year 7 in 2019
 and Year 8 in 2020 in brand new
 Middle School facilities.

ENQUIRE NOW!

Carinya Gunnedah

46 Elgin Street, GUNNEDAH NSW 2380
 Ph: (02) 6742 2766 | E: gunnedah@carinya.nsw.edu.au
 F: facebook.com/CarinyaGunnedah



INSPIRATIONS CAFE, GIFT & PATCHWORK GALLERY

With the perfect combination of unique gifts and home wares, high quality patchwork fabrics and a broad range of sewing machines, Inspirations is waiting to welcome you to our coffee gallery, serving delicious morning and afternoon teas and tasty lunches. Try our home-made meals, slices and cakes and check out our extensive gluten free menu.

Inspirations
cafe, gift & patchwork gallery

A 515 Peel Street, Tamworth
P 02 6766 6800
E sales@inspirationstamworth.com.au
W www.inspirationstamworth.com.au



Tamworth sunset



CITY GATE MOTEL

Country hospitality at its best. Attractive rates for motel. Close to TRECC, AELEC and Sporting Complex.

A 300 Goonoo Goonoo Road, Tamworth 2340
P 02 6765 8368
E citygatemotel@outlook.com.au



ASHBY HOUSE

Framed by manicured gardens, Ashby's elegant facade exudes charm and character.

Ashby has been beautifully refurbished and has been carefully planned so that the charm and character of the property has been retained, whilst ensuring we can provide our guests with all the modern comforts expected by modern travellers.

- Well located to CBD • 4 ½ STAR rated • Fully refurbished rooms
- The Gallery Restaurant opened Monday - Thursday evenings
- Complimentary WIFI, onsite parking and gym access

Mention this ad, and book direct, to receive complimentary continental breakfast for two.



A 83-85 Ebsworth St Tamworth
P 02 6762 0033
E admin@ashbyinn.com.au
W www.ashbyhousemotorinn.com.au



CADMAN MOTOR INN & APARTMENTS

Welcome to Tamworth. At the Cadman we aim to provide you with a welcoming and comfortable stay in either our modern motel rooms or self contained apartments.

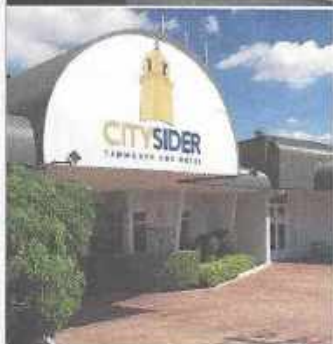
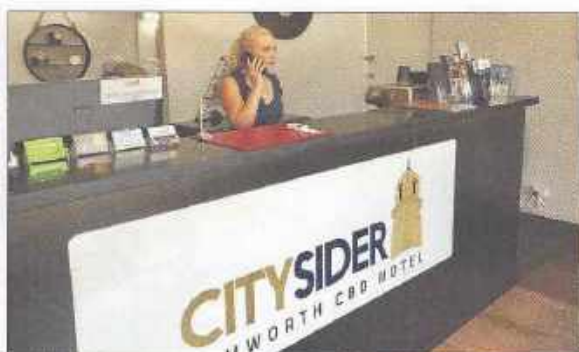
The Cadman is located a short walk from the Tamworth City Centre, convenient to many of our great restaurants, bars, shopping facilities and the fantastic Bicentennial Park. The Cadman is set up for a relaxed and comfortable stay with multiple BBQ areas, inground swimming pool and a large grassed area for the children to play.

We hope you have a great stay in Tamworth.

A 103-111 Ebsworth Street, Tamworth
P 02 6765 3333
W www.cadmanmotorinn.com.au
E enquiries@cadmanmotorinn.com.au



CADMAN
MOTOR INN & APARTMENTS



CITY SIDER MOTEL

Whether you're staying in Tamworth for business or pleasure, the City Sider-Tamworth CBD Motel is the perfect place for you and your family.

The City Sider is the most centrally located Motel in Tamworth consisting of 38 clean and tidy rooms and a 40 seater function room for hire in the heart of the city. A 2 min walk from the Services Club, Cafes and Pubs, look no further than the City Sider for your next stay in Tamworth, Country Music Capital.

Our rooms are non-smoking, air-conditioned and we offer free wifi and complimentary continental breakfast for our guests.



A 237 Marius Street, Tamworth
P 02 6766 4777
E mail@citysidertamworth.com.au
W www.citysidertamworth.com.au



SUNDANCE PARK MOTEL AND CATTLEMAN STEAKHOUSE

Located next to the AELEC, Sundance Park offers extensive gardens, half-court tennis/basketball court and the famous guitar shaped swimming pool. Onsite is the award winning Cattleman Licensed Restaurant and Function Centre, a Tamworth institution, where you can order a fabulous steak cooked to your liking.

A New England Highway, Tamworth
P 02 6765 7922
E sundanceparkmotel@outlook.com
W www.sundancepark.com.au



McNEVIN'S TAMWORTH MOTEL

Luxury accommodation at an affordable price with onsite Licensed Restaurant and Conference Facilities. Set on 3 1/2 acres of landscaped gardens, swimming pool and two pet friendly units with enclosure attached to your room.

A 999 Armidale Road, Tamworth
P 02 6760 9200
E tamworth@mcnevins.com.au



KOOTINGAL KOURT CARAVAN PARK

Located 19kms north of Tamworth, just at the foot of the beautiful Moonbi Ranges, Kootingal Kourt Caravan Park offers large grass powered sites, pet friendly (by arrangement), BBQ area, pool, clean amenities/facilities and friendly staff. Come and enjoy the peace and quiet.

A New England Highway, Kootingal
P 02 6760 3103
E kootingalpark@bigpond.com



AUSTIN TOURIST PARK

Austin Tourist Park has a variety of accommodation options from budget to luxury with and without ensuite.

Drive-thru and riverside caravanning and camping sites are available and large motorhomes are welcome.

Enjoy the swimming pool and playground, covered bbq facilities, camp kitchen, laundry and children's bathroom.

Your feathered or four-legged friends – dogs and cats – are welcome on the riverside camping and caravan sites, provided our pet rules are adhered to. An off-the-leash exercise area is also available.

A 581 Armidale Road, Tamworth NSW 2340
P 02 6766 2380
E bookings@austintouristpark.com.au
W www.austintouristpark.com.au

AustinTouristPark



CITY LIGHTS CARAVAN PARK

Ideally situated 1.5 kilometers past the Golden Guitar on the Sydney Road, close to sporting grounds, entertainment, hotel and restaurants.

Owners Gary and Deborah invite you to enjoy their large friendly, family orientated caravan park, "City Lights".

Accommodation ranges from cabins, workman's caravans to powered and unpowered camping sites.

Recreation facilities include a swimming pool and large games room where you can just relax and watch the big TV or play pool, table tennis and darts. There are lounge chairs and lounges to relax in.

A 612 - 628 Goonoo Goonoo Road, Tamworth
P 02 6765 7664
E reservations@citylightscaravanpark.com.au
W www.citylightscaravanpark.com.au



PARADISE TOURIST PARK

Relaxed, quiet with accommodation overlooking the Peel River and close to the CBD

BIG4 Paradise Tamworth is set on 3 1/2 hectares of landscaped park in a quiet but optimal location, right on the river's edge and positioned in the main street of town close to shopping centres and restaurants.

Our park is located for convenience and provides a range of cabins, villas and sites to deliver a superb relaxed setting and a view to match.

Our amazing camp kitchens and recreational halls are second to none and able to host many gatherings for groups of all kinds.

Park facilities include

- Accommodation styles from luxury villas to cabins, ensuite and powered sites
- Swimming pool and playground
- Two camp kitchens and recreational halls with TV
- Amenities and laundries
- Free WIFI hotspots

A 575 Peel street (cnr of Peel & East Streets)

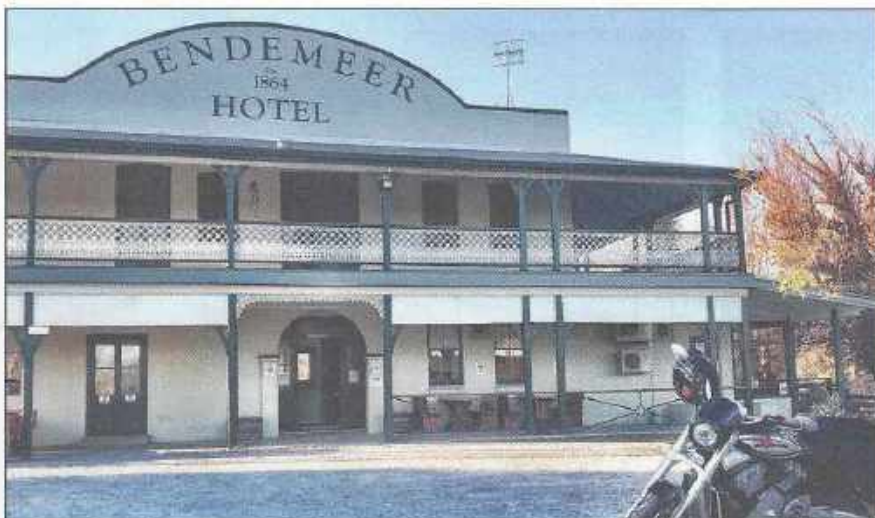
P 02 6766 3120

E reception@paradisetouristpark.com.au

W www.paradisetouristpark.com.au



BIG4
HOLIDAY PARKS



BENDEMEER HOTEL

Situated in scenic Bendemeer and overlooking the MacDonald River, the Bendemeer Hotel offers cozy country accommodation in beautiful surrounds

Home to travellers, local gatherings and a great pub atmosphere since 1864, the pretty township of Bendemeer is located just 30 minutes from Tamworth and 10 minutes from the top of the Moonbi Pass.

BENDEMEER
EST. 1864
HOTEL

With comfortable rooms and excellent dining facilities, the Bendemeer Hotel is the perfect spot to stay and relax for a few days for those looking to discover the treasures of the beautiful New England region.

Host every three years to the Grey Fergie Muster, Bendemeer has all the unspoiled character of a historic rural town and is within easy reach of the Tamworth Country Music Festival held each year in January.

A Caroline Street, Bendemeer 2355

P 02 6769 6550

W www.bendemeerhotel.com.au



ANZAC Park, Tamworth



CURRABUBULA PUB & CAFE

The Currabubula Pub & Cafe provides hearty and affordable dining seven days a week – offering a truly unique experience for locals and visitors any time of year.

Currabubula Pub & Cafe is the perfect venue for you to relax while our friendly staff care for your every need.



P 02 6768 9005
M 0407 928 922
W www.currabubula.com.au



WILLOW TREE INN

Boutique accommodation

Willow Tree Inn has a total of 16 boutique rooms and suites available so it is easy to enjoy an award-winning Colly Creek steak in Graze Restaurant by staying over night. View photos of our boutique accommodation on our website below.

A New England Highway, Willow Tree
P Reservations 02 6747 7711
W www.grazewillowtree.com.au



The DUNGOWAN VILLAGE FAIR

3rd Weekend in October

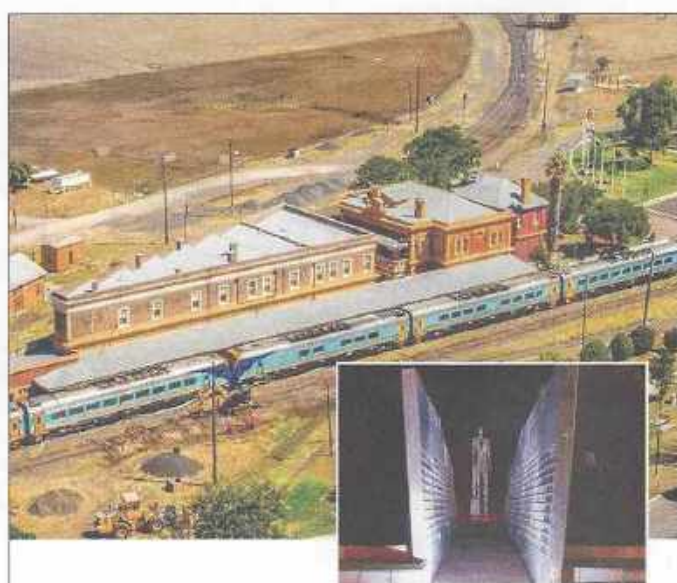
Tractor Trek 3rd Friday in October
 Dungowan Recreation Ground

Come along and enjoy

- Vintage Cars, Trucks, Motor Bikes,
- Tractors, Old Engines & Historical Items.
- Tractor Pull & Kid's Pedal Tractor Pull.
- Dungowan 1200 Rocker Cover Race Cars.
- Kid's Egg Carton & Lego Race Cars.
- Paper & Balsa Wood Gliding Plane Competition.
- Children's Events, Animal Nursery & Games.
- Catering On-site, Coffee Van, Cold Drinks.
- Trading Stalls.
- Entertainment By Up & Coming Young Artists.

Excellent camping facilities on the bank of the Peel River
 Free camping for all stall holders & exhibitors

For more information
Paul Cox 0428 668 633
www.dungowanvillagefair.com.au



AUSTRALIAN RAILWAY MONUMENT AND RAIL JOURNEYS MUSEUM

View displays that bring to life the great railway history of Werris Creek

While you're in Tamworth, why not visit the Australian Railway Monument and Rail Journey's Museum at the Werris Creek Railway Station.

A Railway Station, Werris Creek, 2341
O Each day 10am to 4pm
P 02 6768 7929
E railjny@nsw.chariot.net.au



HENRY'S QUIRINDI

Comfortable accommodation with country style hospitality in beautiful Quirindi NSW

Henry's has 32 tastefully decorated ground level ensuite rooms for corporate travellers, families and groups.

All rooms have flat screen TV, reverse cycle air conditioners, free wi-fi internet and free parking.

Henry's
QUIRINDI

A 119-121 Henry Street,
Quirindi NSW 2343
P 02 6746 1166
E bookings@henrysquirindi.com.au
W www.henrysquirindi.com.au



Huge smiles at the Gunnedah Rural Museum



GUNNEDAH RURAL MUSEUM

The Gunnedah Rural Museum is one of Australia's largest collections of early agriculture and transport memorabilia.

Discover our growing display of over 25,000 exhibits, including: tractors, steam engines, antique farm machinery, horse drawn and motorised vehicles, household items, communication equipment, gun collection, RSL exhibit, working foundry and timber workshop.

OPEN
EVERY DAY
9AM to 3PM

A Cnr Oxley Highway and
Alford Street, Gunnedah
P 02 6742 4690



VISIT THE LIVERPOOL PLAINS

Quirindi means "nestled in the hills", and if you take tourist drive 25 between Tamworth and Willow Tree, you will see that the name for this charming country town fits.

The Liverpool Plains offers scenic drives through seasonal coloured crops and attractions keeping our heritage alive: the Railway Monument and Rail Journeys Museum in Werris Creek, the Rural Heritage Village in Quirindi, the First and Second Memorial Gardens in Wallabadah and the Kamilaroi, a Highway a People display in Willow Tree.

You will be greeted with good old country hospitality in the numerous cafes, pubs and restaurants and find hidden gems throughout the Liverpool Plains.

Sunflower alert: send us an email to info@visitquirindi.com.au and we will inform you each season when and where the sunflowers are in bloom!

For more detailed information on our attractions and events go to our website or drop into the Liverpool Plains Visitor Information Centre on the New England Highway in Willow Tree.

A Visitor Information Centre, Willow Tree
P 02 6747 1226
E info@visitquirindi.com.au
W www.visitquirindi.com.au



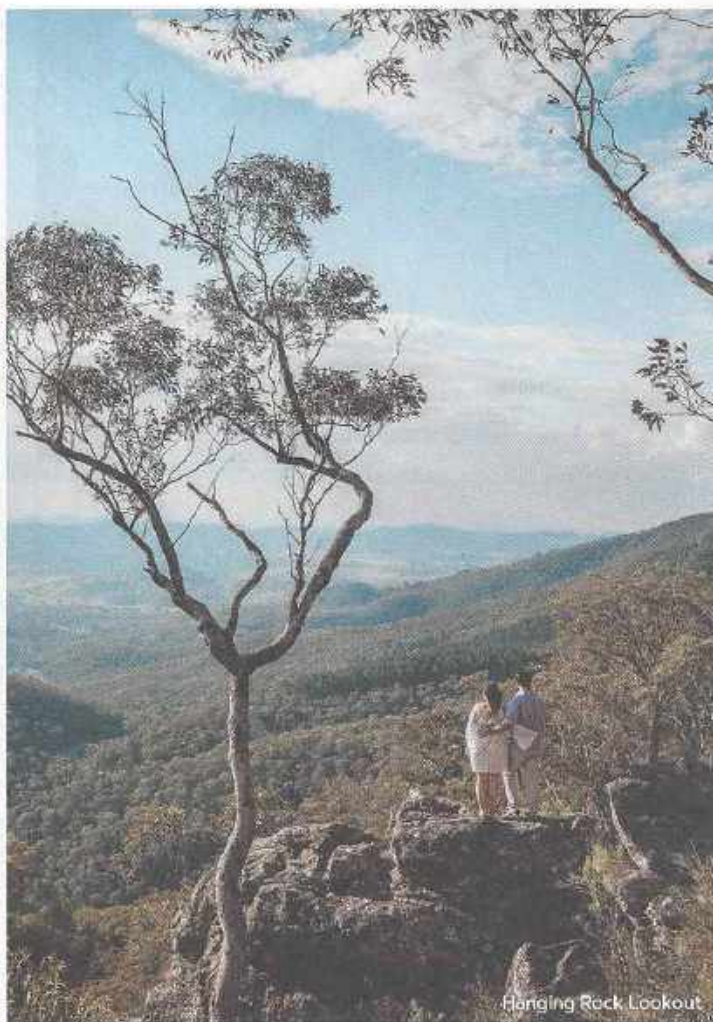
NUNDLE

Hills of gold



IMAGE: Jessica Parikh

Charley Dam



Hanging Rock Lookout

So many reasons to visit

A charming village of 300 people in the beautiful Hills of Gold, 50km south-east of Tamworth, Peel Valley, NSW.

Relax in the peaceful environment, surrounded by grazing country, State Forest and bushland. Explore Nundle's boutique businesses, enjoy local produce, country cooking and hospitality.



JANUARY	Nundle Rocks & Country At The DAG Tamworth Country Music Festival
MARCH	Nundle Country Picnic
EASTER	Nundle Go For Gold Chinese Easter Festival
MAY	The Great Nundle Dog Race
JULY	Hats Off to Country/Christmas in July
NOVEMBER	Nundle CWA Art Show

NUNDLE.COM.AU

Nundle Visitor Information Outlet (02) 6769 3026

Supported by
 through

Multi-Award winning NUNDLE WOOLLEN MILL

OPEN 7 DAYS

Machines operate Monday to Friday
Free 2:00PM Tour – Monday to Friday

Each year, over 30,000 visitors make the journey to our little town to tour Nundle Woollen Mill.

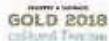
In our regular tours, visitors marvel at our antique machines humming away as they work their magic to turn bales of the finest Australian merino wool into yarns in the vibrant colours for which we have become famous.

A visit to the Mill is a chance to reconnect with Australia's wool heritage and browse our yarns, clothing and accessories.

We have been finalists and/or winners in the Australian Tourism Awards, New South Wales Tourism Awards and Inland Tourism Awards.

We welcome independent travellers and groups.

For all tour bookings, please call
1300 NUNDLE (1300 686 353).



Nundle Woollen Mill
35 Oakenville St
Nundle, NSW 2340
Phone: 1300 686 353
Online Sales: sales@nundle.store
Online store: <https://nundle.store>
Open 7 days a week from 10am till 4pm.

DESTINATIONTAMWORTH.COM.AU

BARRABA

An arts and culture hub



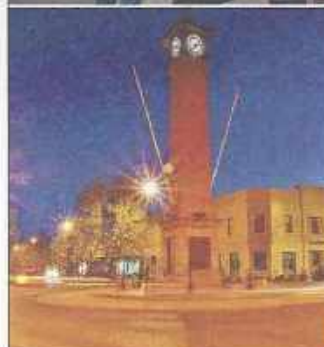
PLAYHOUSE HOTEL, BARRABA

Whether you're visiting inland NSW for business or for pleasure, let yourself be looked after in easy-going style at The Playhouse Hotel.

One of the region's most popular hospitality venues, The Playhouse Hotel is a great place for parties, conferences, theatre events or simply relaxing overnight stays. Offering quality accommodation, first-class dining and inspiring entertainment – all at affordable prices. Air-conditioned bedrooms have comfortable queen and single beds and clean, modern en-suite bathrooms.

A 123 Queen St, Barraba
P 02 6782 1109
W www.playhousehotel.com

The
PLAYHOUSE
 HOTEL



BEAUTIFUL BARRABA

A scenic 60 minute drive from Tamworth, Barraba has boutiques, speciality shops and an arts and crafts gallery. Enjoy country hospitality at Barraba's restaurants, cafes, clubs and pub.

Experience the natural beauty of the countryside and the historic main street. Visit a great picnic spot, walk in the bush and swim in the inviting town pool, awarded the best swimming complex in NSW in 2014.

- **Andy's Guest House** • **Babes in the Bush**
- **Barraba Beef Co.** • **Barraba IGA**
- **Barraba Show (8-10 March 2019)** • **Bill McKid P/L**
- **Frocks 'n' Locks** • **Fuller Gallery**
- **Stock & Crop** • **The Playhouse Hotel**
- **Universal Commercial Catering Equipment**

MANILLA

Where past and present collide



Manilla Visitor Information Outlet



MANILLA VINTAGE MACHINERY RALLY

- Held on Saturday and Sunday of the June Long weekend
- Proudly hosted by the Manilla Vintage Machinery Group
- See vintage tractors, cars, machinery and stationary engines
- Street parade on Saturday morning.



A Manilla Showground
P 0428 968 260
W www.manillavintagemachinery.com.au



MOLLY MAY'S

Come to Molly May's at Manilla to experience great food, coffee and indulge in an Ultimate Shake. Stocking specialty brands, Pukka teas, Cheeki, New England Larder, Pukara, and more. Antiques in store. Take the time and relax in the pet friendly gardens. It's worth the drive.

A 209-213 Manilla St, Manilla 2346
P 02 6785 1300



MANILLA PARAGLIDING

Australia's only world class flying site and school - as seen on TV show 'Getaway!' Try a tandem experience flight with a highly qualified instructor or 9 day live-in-licence course.

A The Mountain, Wimbourne Rd, Manilla
P 02 6785 6545
E godfrey@flymanilla.com

DON'T MISS YOUR OPPORTUNITY TO SEE ONE OF THE WORLD'S BIGGEST FIELD DAYS!

Showcasing over 3,000 companies. You'll discover new trends, enjoy an amazing spectacle, testing new and innovative agri-products.

AUSTRALIA'S LARGEST, PREMIER PRIMARY INDUSTRY EVENT!



DESTINATIONTAMWORTH.COM.AU

AgQuip

Sponsored by

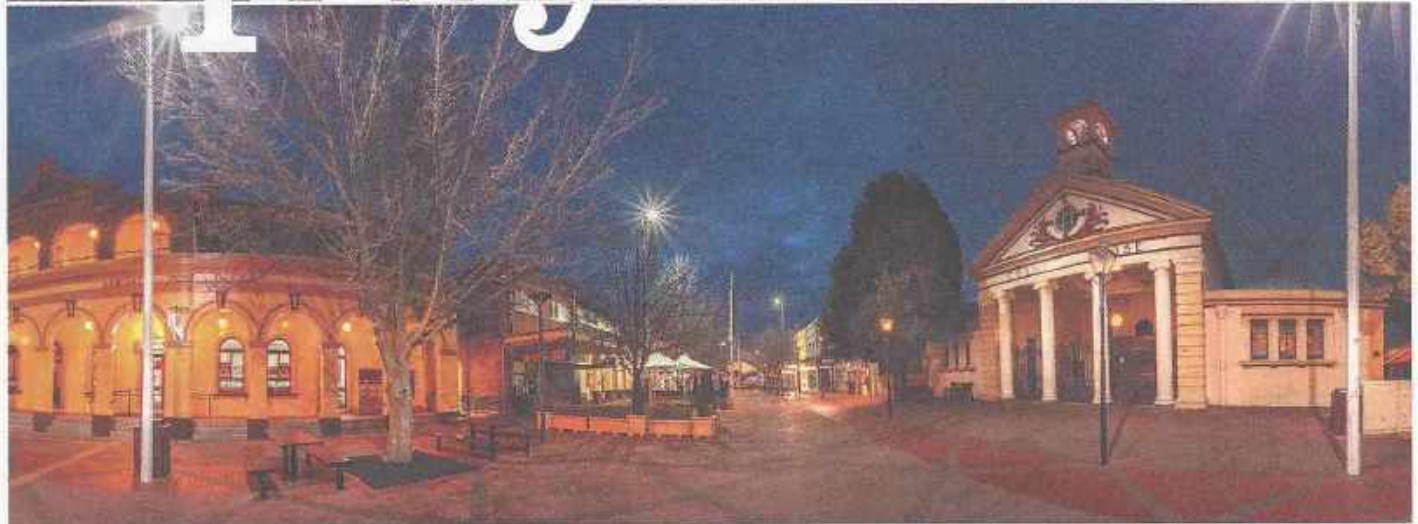
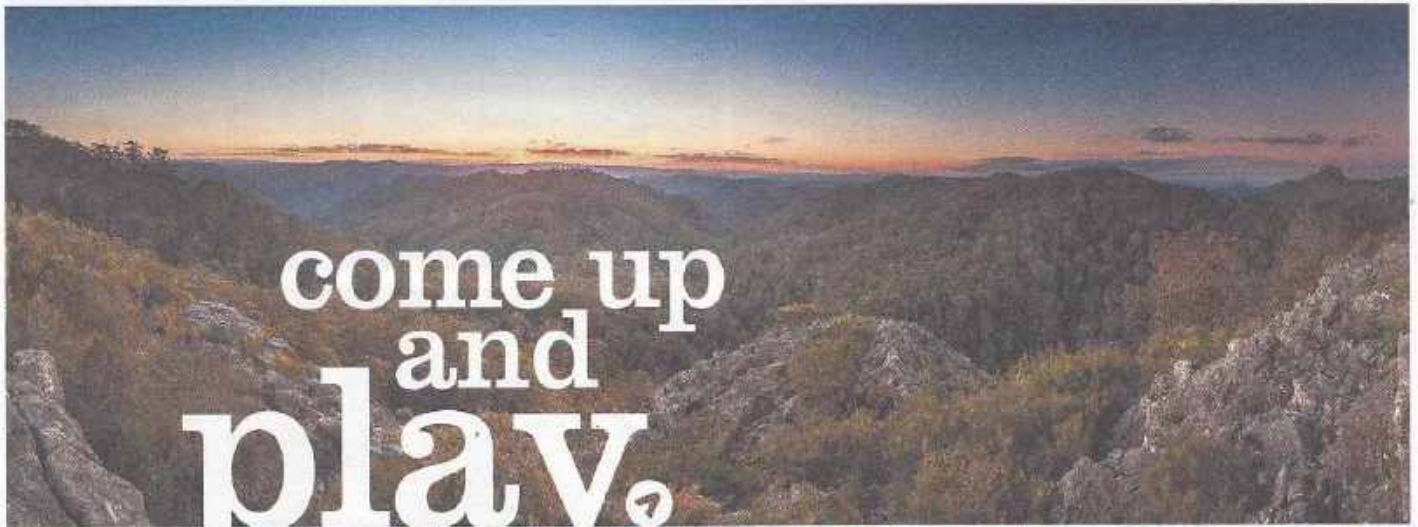
CommonwealthBank

**TUESDAY-THURSDAY
20TH - 22ND
AUGUST 2019**

Black Jack Road, GUNNEDAH NSW

www.agquip.com.au





With spectacular waterfalls, gorges, world-heritage national parks, cool-climate vineyards and a fascinating and diverse cultural heritage, New England High Country has for a long time been something of a hidden gem. When you visit you'll also discover the galleries, boutique shopping and fine local produce that is making the region a must-see destination.

newenglandhighcountry.com.au

Armidale
Glen Innes
Guyra • Inverell
Tenterfield
Uralla • Walcha

**new
england
high
country**

ACCOMMODATION LISTING

Regardless of whether you prefer to sleep under a canopy of stars or the luxury of a 5-star hotel, the Tamworth region offers accommodation options for all budgets and styles. With everything from quaint B&Bs, farm stays and backpacker hostels, family-friendly motels, tourist parks, self-contained apartments and pubs, to luxurious boutique hotels, the region truly has it all.



Kick off your boots, take a deep breath and relax. Welcome to your home away from home. Now all that's left to do is explore the incredible Tamworth region, and enjoy your stay!

NOTE: We recommend contacting pet-friendly providers for their pet policy

Hotel/Motel/Self-contained	Address	Phone	Pet Friendly
Abraham Lincoln Motel	343 Armidale Rd, Tamworth	02 6766 1233	
Almond Inn Motel	389 Armidale Rd, Tamworth	02 6766 1088	YES
Amberoo Apartments	5-7 Janison St, East Tamworth	02 6766 3231	
Andy's Guesthouse	98 Queen Street, Barraba	02 6782 1916	
Ashby House	83-85 Ebsworth St, Tamworth	02 6762 0033	
Barraba Motel	17 Edward St, Barraba	02 6782 1555	YES
Bendemeer Hotel	112-130 Caroline St, Bendemeer	02 6769 6550	
Best Western All Settlers Motor Inn	191 Goonoo Goonoo Rd, Tamworth	02 6762 1566	
Best Western Sanctuary Inn	293 Marius St, Tamworth	02 6766 2903	YES
Best Western Tamworth Motor Inn	212 Goonoo Goonoo Rd, Tamworth	02 6765 4633	
Cadman Motor Inn	103 Ebsworth St, Tamworth	02 6765 3333	
CH Boutique Hotel	52 Brisbane Street, Tamworth	02 6766 7260	
City Gate Motel	300 Goonoo Goonoo Rd, Tamworth	02 6765 8368	YES
City Sider Motor Inn	237 Marius St, Tamworth	02 6766 4777	
Colonial Inn Tamworth	519 Armidale Rd, Tamworth	02 6766 1866	
Commercial Hotel	136 Queen St, Barraba	02 6782 1023	
Country Capital Motel	193 Goonoo Goonoo Rd, Tamworth	02 6765 5966	
Court House Hotel	240 Peel St, Tamworth	02 6766 1279	
The Duck Inn Apartments	152 - 182 Gunnedah Rd, Tamworth	02 6760 7103	
Econo Lodge Tamworth	236 Goonoo Goonoo Rd, Tamworth	02 6765 7022	
Edward Parry Motel	261 Goonoo Goonoo Rd, Tamworth	02 6765 9075	
Golden Grain Motor Inn	228 Goonoo Goonoo Rd, Tamworth	02 6765 3599	
Golden Guitar Motor Inn	2/8 The Ringers Rd, Tamworth	02 6762 2999	
Golf Links Motel	260 Bridge St, Tamworth	02 6762 0505	YES
Goonoo Goonoo Station	13304 New England Highway, Timbumburi	0429 384 297	
Hills of Gold Motel	Cnr Jenkins & Oakenville St, Nundle	02 6769 3222	YES
Ibis Styles Tamworth	Cnr Oxley Highway & Ebsworth St, Tamworth	02 6765 8361	YES
Imperial Hotel	226 Manilla St, Manilla	02 6785 1018	
Kelly's Cottage	99 Ebsworth St, Tamworth	02 6765 8840	
Kootingal Hotel	20 Gate St, Kootingal	02 6760 3203	
Kootingal Landview Motel	New England Highway, Kootingal	02 6760 3273	
Manilla Motel	8 Court St, Manilla	02 6785 1306	
McNevins Tamworth Motel	999 Armidale Rd, Tamworth	02 6760 9200	YES
Mercure Tamworth	'Scully Park', Kent St, Tamworth	02 6765 1200	
Motabelle Motel	303 Goonoo Goonoo Rd, Tamworth	02 6765 7274	
Motel 359	359 Goonoo Goonoo Rd, Tamworth	02 6762 4100	
Motel Grande	117 Goonoo Goonoo Rd, Tamworth	02 6765 4444	
Muluerindie Cabin	Access via Retreat Road, Warrahah National Park	02 6777 4700	
Oasis Motel/Hotel	583 Armidale Rd, Tamworth	02 6766 3391	
Peel Inn Hotel	89 Jenkins St, Nundle	02 6769 3377	
The Playhouse Hotel	123 Queen St, Barraba	02 6782 1109	
Quality Hotel Powerhouse	Armidale Rd, Tamworth	02 6766 7000	
Quest Tamworth	337 Armidale Rd, Tamworth	02 6761 2366	YES
Rex Guest House	32 White St, Tamworth	02 6766 1030	
Roseville Apartments	2 Gipps St, Tamworth	02 6765 3644	
Royal Hotel	155 Manilla St, Manilla	02 6785 1017	

Hotel/Motel/Self-contained	Address	Phone	Pet Friendly
Roydon's Motor Inn	Cnr Church St & Goonoo Goonoo Rd, Tamworth	02 6765 7355	YES
Southgate Inn	16A Kent St, Tamworth	02 6765 7999	
Stagecoach Inn	401 Armidale Rd, Tamworth	02 6766 6311	
Stockmans Motel	2-24 Spains Lane, Kingswood	02 6765 8525	
Sundance Park	Cnr Burgmans Lane & New England Highway, Tamworth	02 6765 7922	
Tamworth Central Motel	235 Goonoo Goonoo Rd, Tamworth	02 6762 2277	YES
Tamworth City Motel	350 Goonoo Goonoo Rd, Tamworth	02 6765 9258	YES
Tamworth Hotel	147 Marius St, Tamworth	02 6766 2923	
Tamworth Lodge Motel	159 Goonoo Goonoo Rd, Sth Tamworth	02 6765 5585	YES
Town and Country Motor Inn	217 Goonoo Goonoo Rd, Tamworth	02 6765 3244	
Tudor Hotel	327 Peel St, Tamworth	02 6766 2930	
Guesthouses	Address	Phone	Pet Friendly
Ambleside B&B	52 Rushes Creek Rd, Manilla	0455 268 802	
Andy's Guest House	98 Queen Street, Barraba	02 6782 1916	
Birches B&B at Nundle	Cnr Oakenville & Gill Street, Nundle	02 6769 3227	
Bywondah Retreat	1751 Ogunbil Road, Ogunbil	02 6769 0206	
The DAG Sheep Station	1067 Crawney Road, Nundle	02 6769 3486	
Gold Mine Guesthouse	80 Gill Street, Nundle	0428 401 127	
Goonoo Goonoo Station	13304 New England Highway, Timbumburi	0429 384 297	
Hillside Farm Stay	245 Nundle Road, Nemingha	0402 797 196	
Jenkins Street Guesthouse	85 Jenkins Street, Nundle	02 5701 2110	
The Playhouse Hotel	123 Queen Street, Barraba	02 6782 1109	
Plumes on the Green	25 The Ringers Road, Tamworth	02 6762 1140	
The Retreat at Froog-Moore Park	78 Bligh Street, Tamworth	02 6766 3353	
Riverside Stay	912 Watsons Creek Road, Bendemeer	0427 138 357 or 0411 026 537	
Studio 367	367 Goonoo Goonoo Rd, Tamworth	0400 364 430	
Tamworth Exclusive B&B	2 Poolya Avenue, Tamworth	0438 155 585	
Caravan Parks	Address	Phone	Pet Friendly
Austin Top Tourist Park Cabins	581 Armidale Rd, Tamworth	02 6766 2380	YES
Barraba Caravan Park	10-22 Bridge St, Barraba	02 6782 1818	
Bendemeer Tourist Park	99 Havannah St, Bendemeer	02 6769 6604	YES
City Lights Caravan Park	612-628 Goonoo Goonoo Rd, Tamworth	02 6765 7664	YES
Fossickers Tourist Park	1-33 Jenkins St, Nundle	02 6769 3355	YES
Kootingal Kourt Caravan Park	3 Churchill Drive, Kootingal	02 6760 3103	YES
Manilla River Gums Caravan Park	86 Strafford St, Manilla	02 6785 1166	
Paradise Tourist Park	575 Peel St, Tamworth	02 6766 3120	
Reflections Holiday Park	234 Keepit Dam Rd, Lake Keepit	02 6769 7605	YES
Somerton Pub	42 Brooke Street, Somerton	02 6769 7683	
Tamworth North Holiday Park	New England Highway Nemingha	02 6760 9356	YES
Backpackers & Groups	Address	Phone	Pet Friendly
Amberoo Apartments	5-7 Janison St, East Tamworth	02 6766 3231	
DAG Sheep Station	1067 Crawney Road, Nundle	02 6769 3486	
Dawsons Spring Cabins	Mount Kaputar National Park	1300 072 757	
Goonoo Goonoo Station	13304 New England Highway, Timbumburi	0429 384 297	
Imperial Brew House	181-195 Marius St, Tamworth	02 8921 0000	
Muluer Indie Cabin	Access via Retreat Road, Warrabah National Park	02 6777 4700	
Tamworth Bunkhouse	118 Goonoo Goonoo Road, Tamworth	0414 361 924	
Tamworth YHA	169 Marius St, Tamworth	02 6761 2600	





GETTING HERE

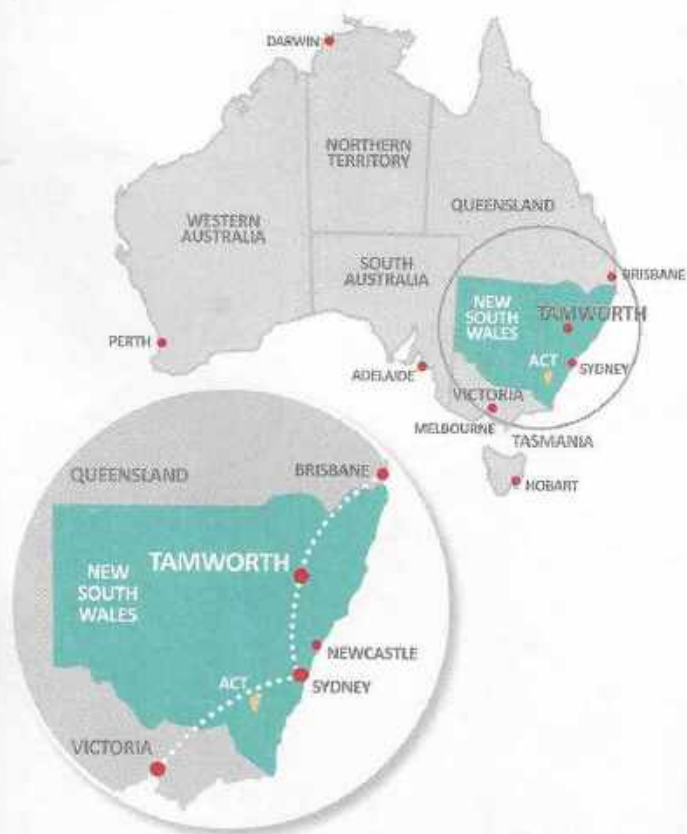
Fly: Tamworth is the proud home to one of the busiest regional airports in Australia. Three airlines service Tamworth Regional Airport with multiple daily flights to and from Sydney and Brisbane.

Drive: Tamworth is 405km north-west of Sydney, 280km from Newcastle and 570km south of Brisbane.

Train & Bus: NSW TrainLink operates a daily rail service between Sydney and Tamworth via Newcastle, as well as coach services from Brisbane and Coffs Harbour.



For detailed information about getting to, from and around the Tamworth region whilst you're visiting, head to destinationtamworth.com.au



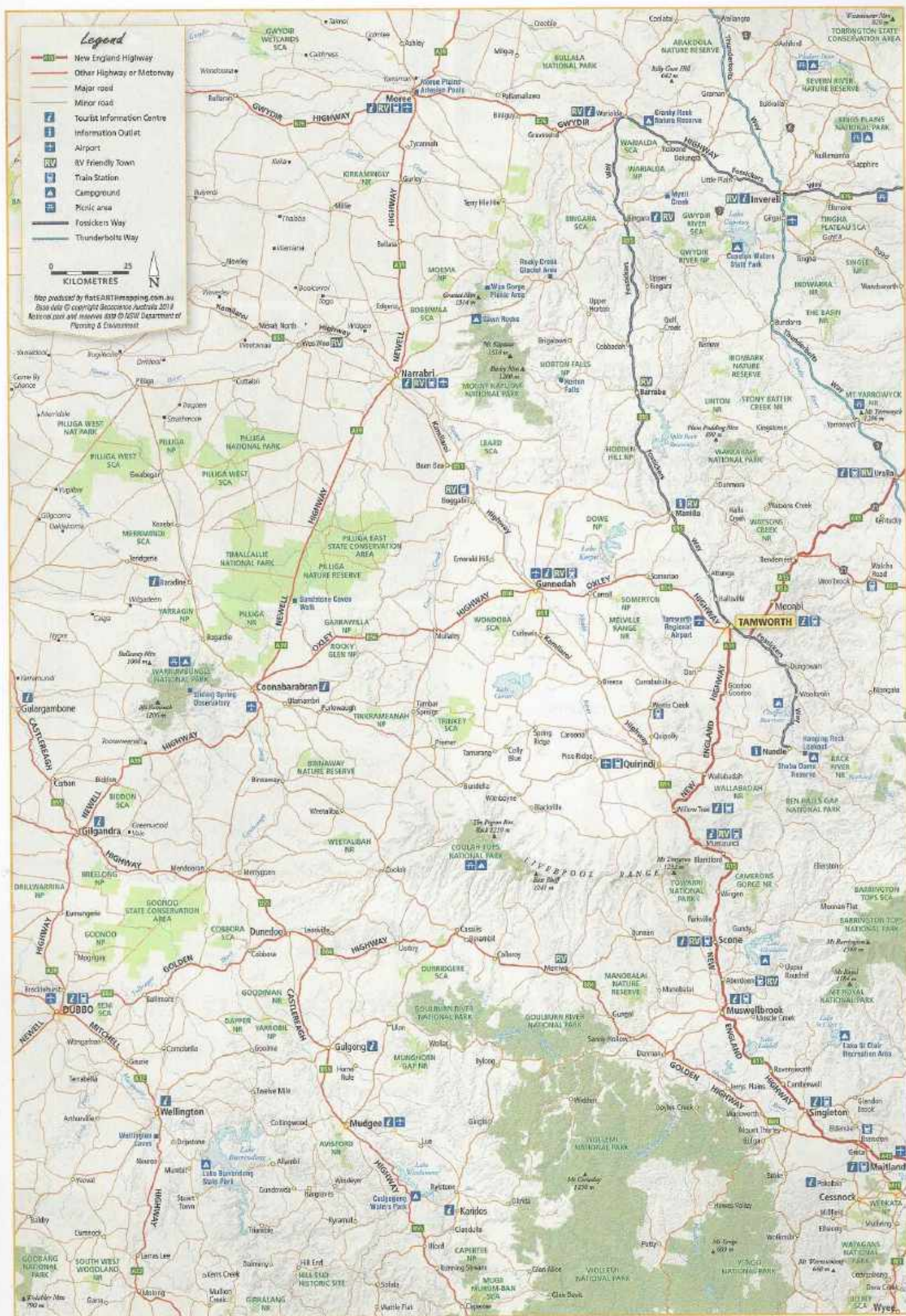
Hertz

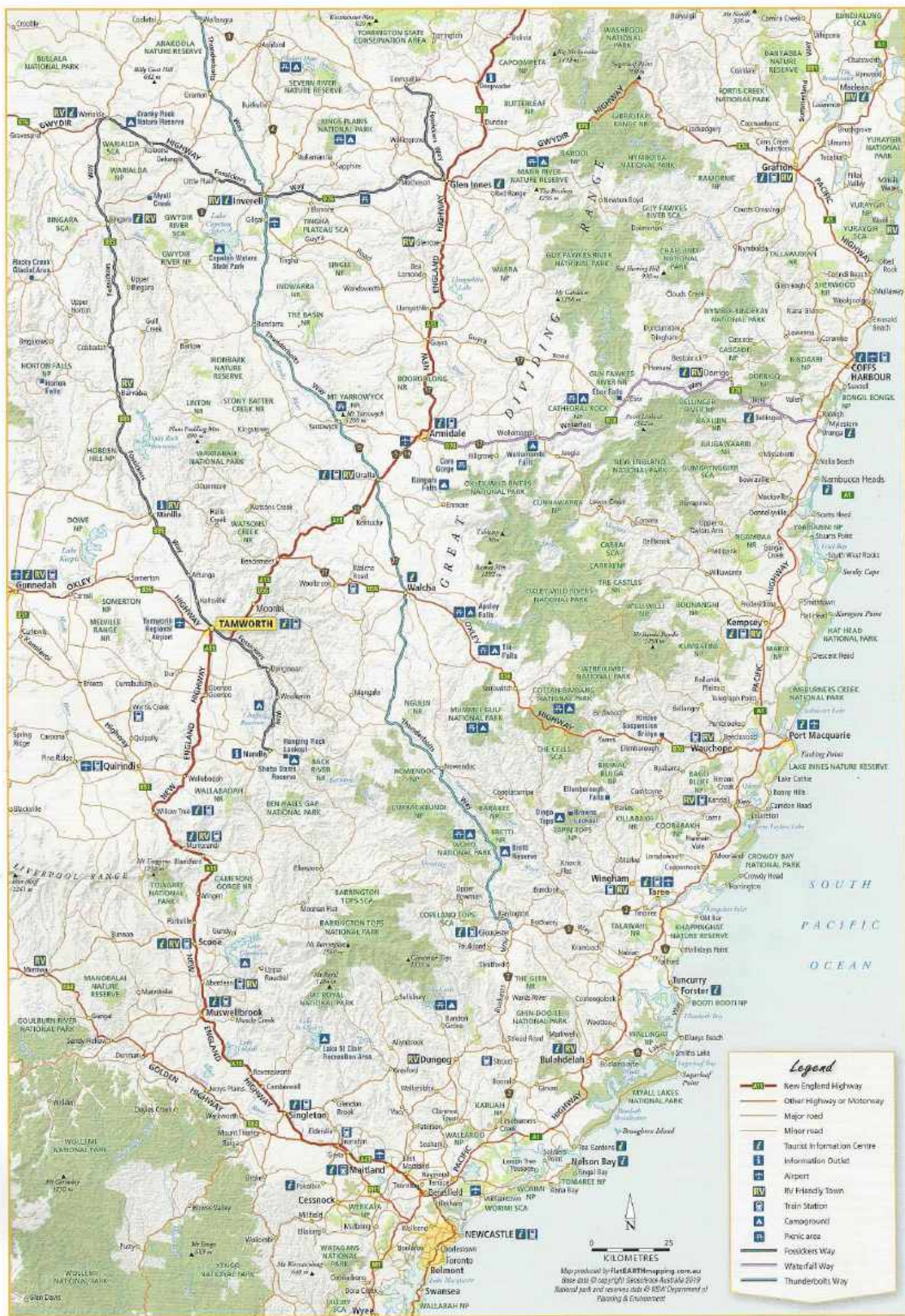
Choose Hertz for great deals on rentals.

Visit hertz.com.au or call 1300 767 339 to make your booking.



DESTINATIONTAMWORTH.COM.AU







Situated in the heart of Tamworth - you'll find the luxurious CH Boutique Hotel.



We have a variety of stunning rooms available which are beautifully appointed.

Or maybe you're looking for an unrivalled dining experience? DECO Wine Bar & Restaurant is CH Boutique Hotel's beautiful in-house award-winning restaurant. Open 7 days serving a delicious fusion of Modern Australian cuisine... open for breakfast, lunch & dinner

There's so much to see and do in Tamworth... and it's all right on your doorstep!

Once you stay with us at CH Boutique Hotel... you'll never want to leave!



 chboutiquehotel  ch_boutique_hotel_tamworth

 (02) 6766 7260  reservations@chboutiquehotel.com.au

 52 Brisbane Street, Tamworth NSW 2340  chboutiquehotel.com.au

DECO
WINE BAR & RESTAURANT

Looking for an unrivalled dining experience?
CH BOUTIQUE HOTEL'S IN-HOUSE RESTAURANT | 330 PEEL STREET, TAMWORTH, NSW 2340

